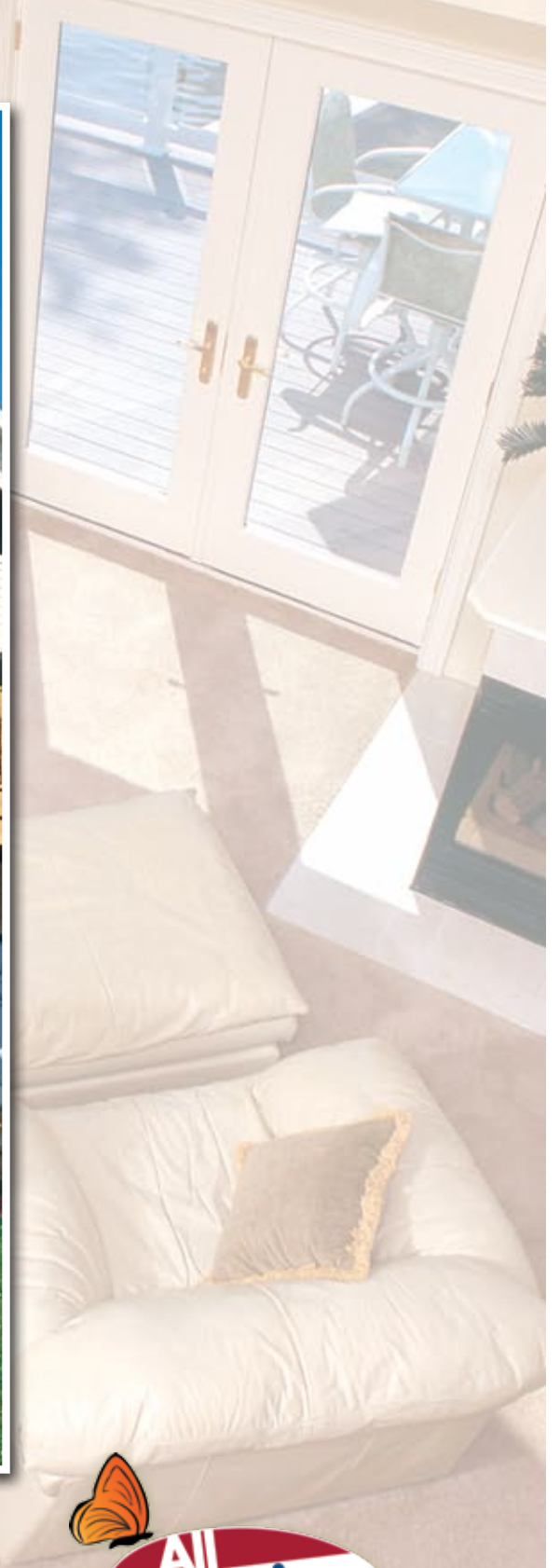


Classic Cape Cod Collection



The traditional design of CAPE COD



Shown on front cover:
Bayshore Exterior/Interior

Shown on this page:
Bayshore Interiors

The Classic Cap Cod Collection provides simple and subtle design elements to create a spacious and comfortable living environment. Elegant style and open spaces promote a relaxed, intimate atmosphere.

Classic Collection

Manchester



Renderings depict optional features.

Style

Cape Cod

Total Square Feet

3,485

(2,260 first floor, 1,225 second floor)

Bedrooms

5 (with suggested second floor)

Baths

3.5 (with suggested second floor)

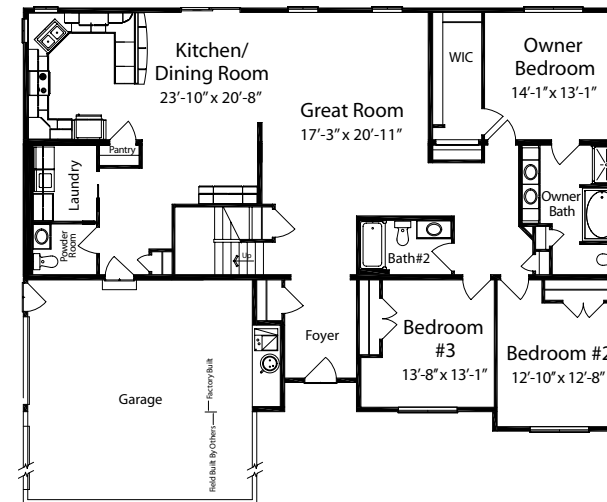
Footprint

62' x 53'

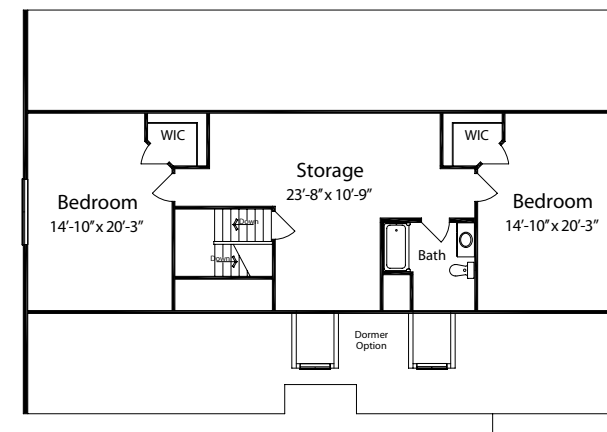
M 4462 3 2.5 (B) STD

The "heart" of the Manchester is the combination of the kitchen, dining room and great room. This warm and comfortable open space will be the place your family can make memories. Plenty of room on the main level and a huge suggested upper level will give you over 3,400 square feet.

First Floor



Suggested Second Floor
(All work performed on-site by others)



Classic Collection

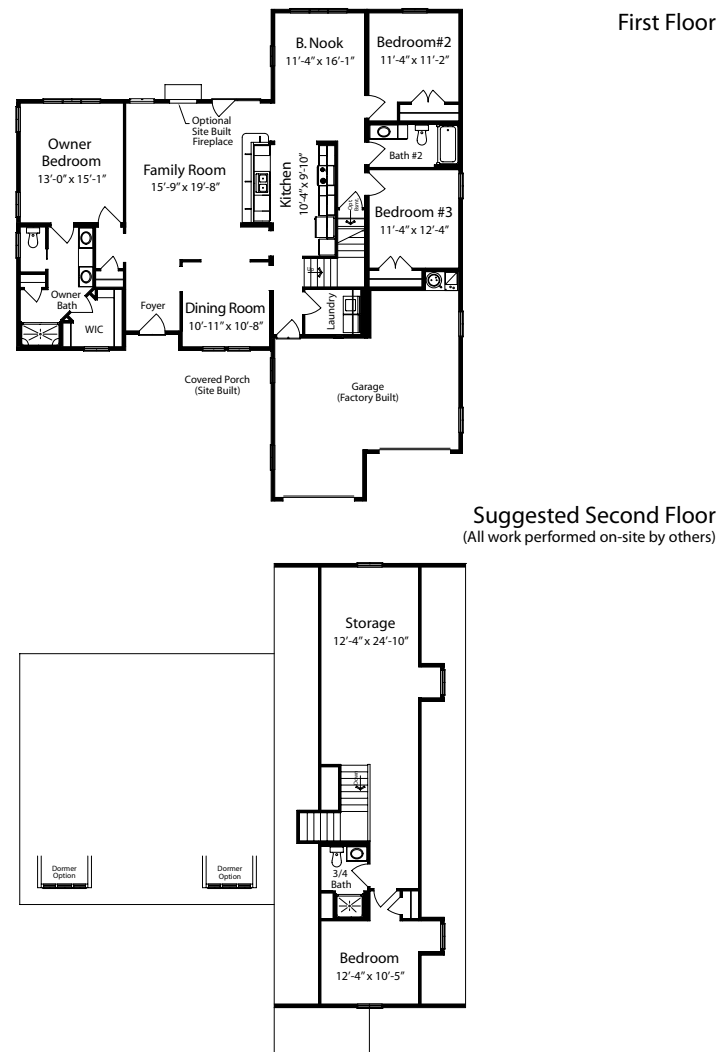
Pickford

Classic Collection

Sawyer



Renderings depict optional features.



Style

Cape Cod

Total Square Feet

2,644

(1,932 first floor, 712 second floor)

Bedrooms

4 (with suggested second floor)

Baths

2.75 (with suggested second floor)

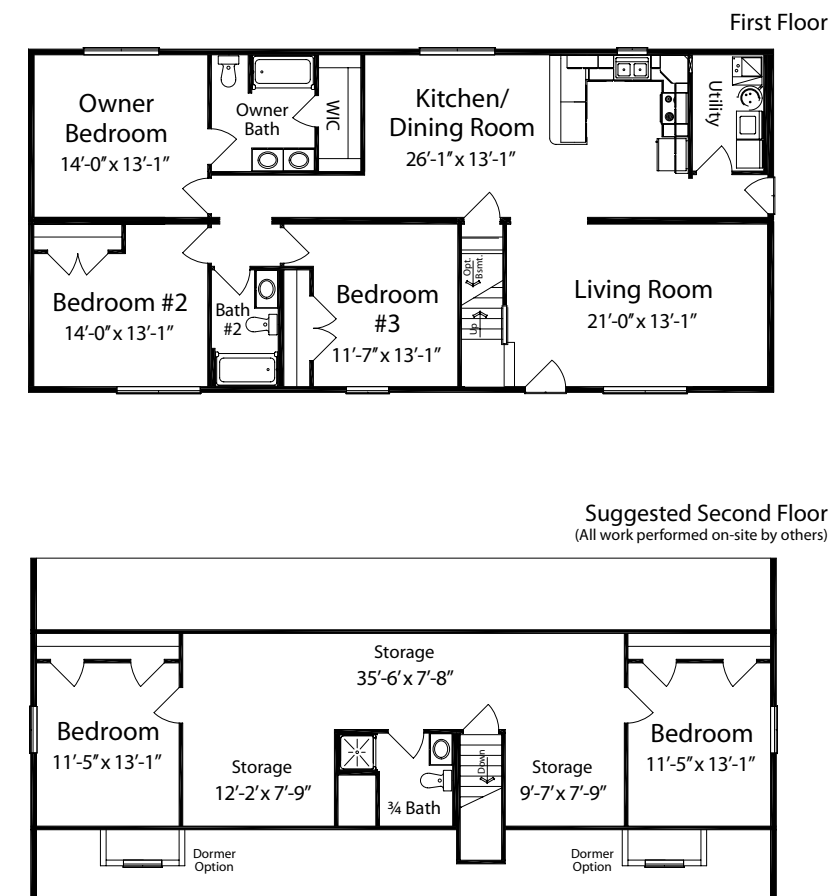
Footprint

62' x 56'

Pickford



Renderings depict optional features.



Style

Cape Cod

Total Square Feet

2,600

(1,658 first floor, 942 second floor)

Bedrooms

5 (with suggested second floor)

Baths

2.75 (with suggested second floor)

Footprint

60' x 28'

SOAR 2860 3 2 EU (B) STD

The Sawyer is a spacious cape that makes good use of every square foot of floor space. Large bedrooms on the main level along with a roomy kitchen and dining combination make the Sawyer a great place to call home.

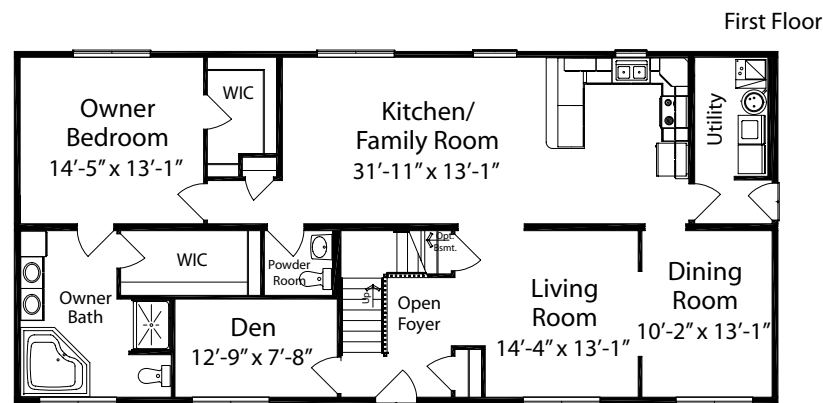


Classic Collection

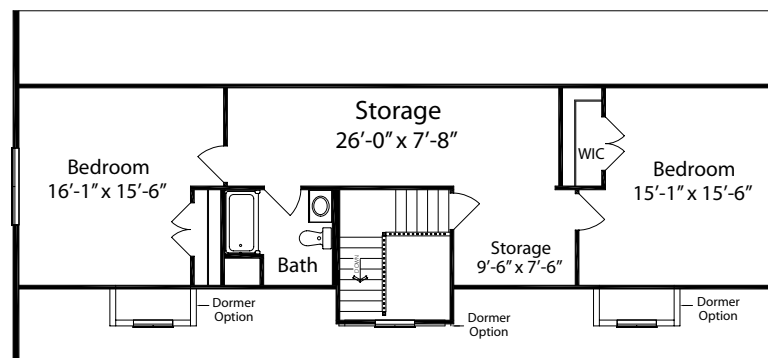
Kinross



Renderings depict optional features.



Suggested Second Floor
(All work performed on-site by others)



Style

Cape Cod

Total Square Feet

2,561

(1,658 first floor, 903 second floor)

Bedrooms

3 (with suggested second floor)

Baths

2.5 (with suggested second floor)

Footprint

60' x 28'

K 2860 1 1.5 MS D (B) STD

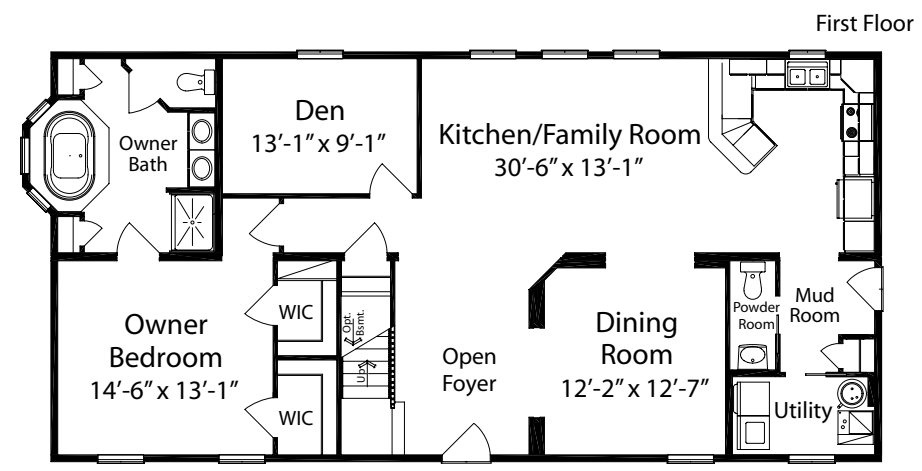
The Kinross is a large cape with a formal dining room, kitchen and family room combination. You will enjoy the privacy of the den when you need to get away from it all. Or you may just want to soak in the garden tub for a while.

Classic Collection

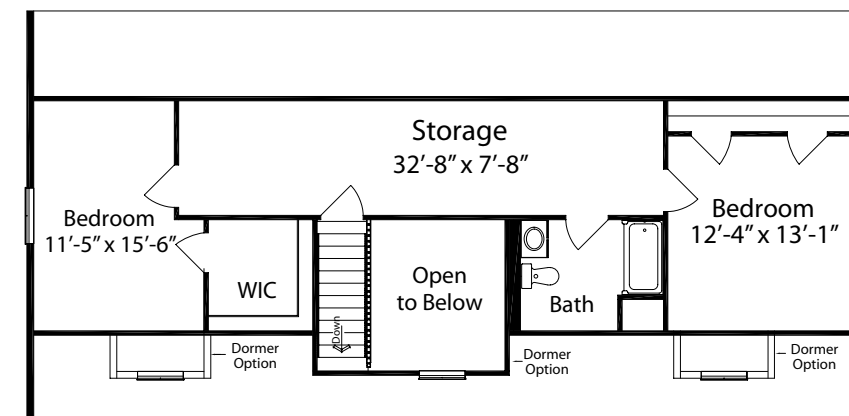
Kiden



Renderings depict optional features.



Suggested Second Floor
(All work performed on-site by others)



Style

Cape Cod

Total Square Feet

2,367

(1,559 first floor, 808 second floor)

Bedrooms

3 (with suggested second floor)

Baths

2.5 (with suggested second floor)

Footprint

56' x 28'

K 2856 1 1.5 MS D (B) STD

The Kiden features an elegant style and rich appointments throughout. You will love the way the dramatic dining room looks as you enter the home along with the inviting kitchen and family room combination. The luxurious garden tub is always waiting whenever you need a little time to yourself.



Classic Collection

Stafford



Renderings depict optional features.

Style

Cape Cod

Total Square Feet

2,208

(1,448 first floor, 760 second floor)

Bedrooms

5 (with suggested second floor)

Baths

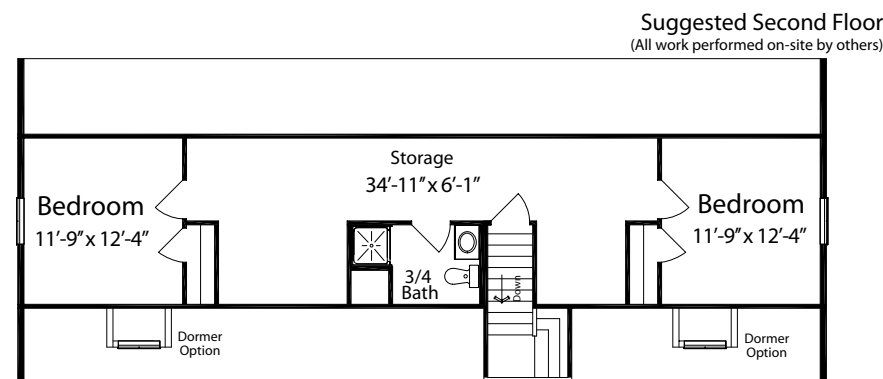
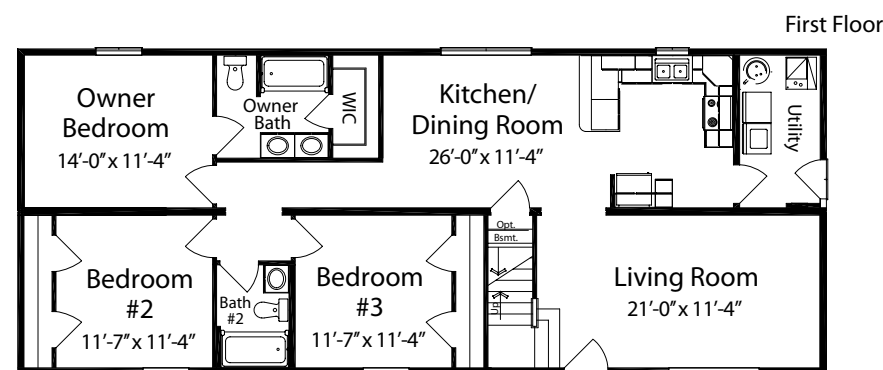
2.75 (with suggested second floor)

Footprint

60' x 24'

SOAR 2460 3 2 EU SB (B) STD

The Stafford is designed for the family that needs space. With ample storage on the suggested second floor and bedrooms on both levels, the Stafford makes sense for families who are on the grow!



Classic Collection

Kea



Renderings depict optional features.

Style

Cape Cod

Total Square Feet

2,123

(1,381 first floor, 742 second floor)

Bedrooms

3 (with suggested second floor)

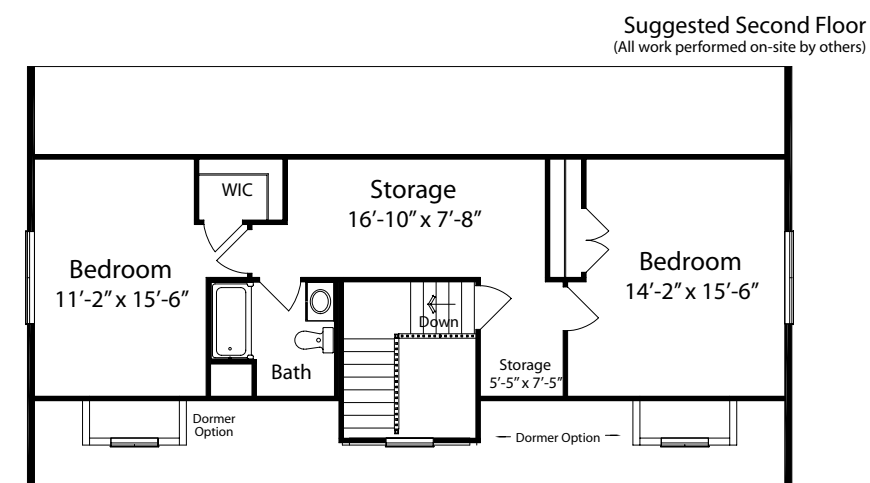
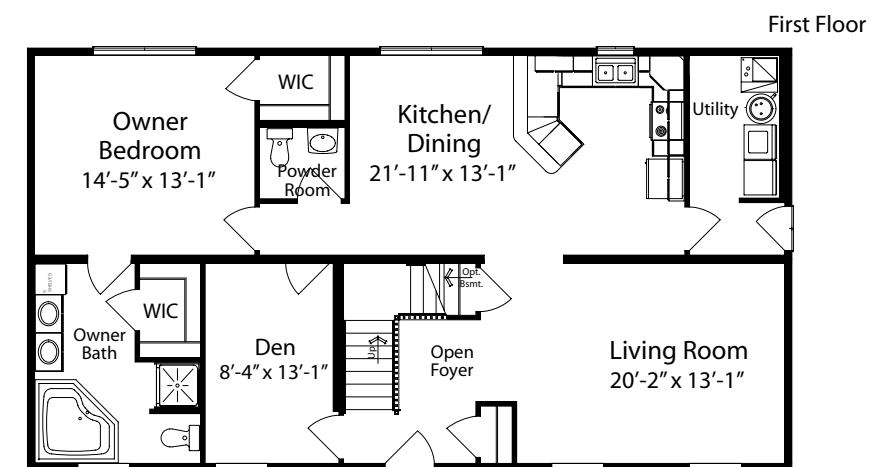
Baths

2.5 (with suggested second floor)

Footprint

50' x 28'

K 2850 1 1.5 MS (B) STD



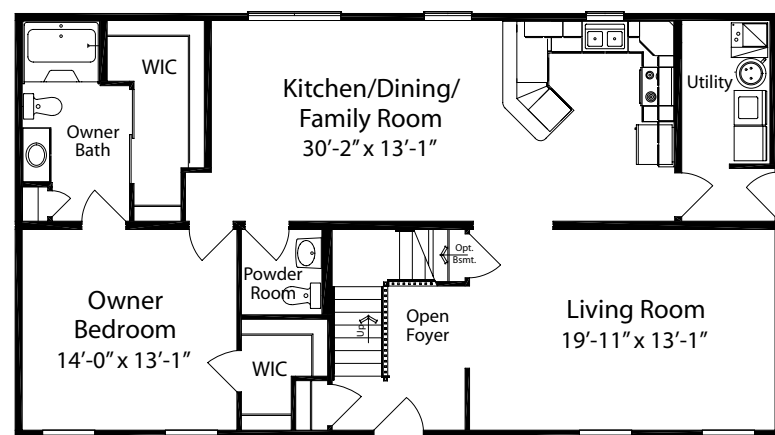
Classic Collection

Kelsey

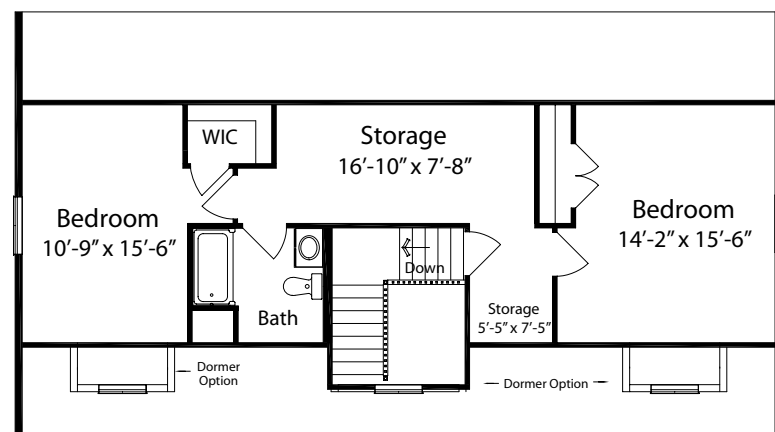


Renderings depict optional features.

First Floor



Suggested Second Floor
(All work performed on-site by others)



Style

Cape Cod

Total Square Feet

2,123

(1,381 first floor, 742 second floor)

Bedrooms

3 (with suggested second floor)

Baths

2.5 (with suggested second floor)

Footprint

50' x 28'

K 2850 1 1.5 EU (B) STD

Picture summer nights on the optional porch with a glass of lemonade in your hand and a beautiful sunset on the horizon. The Kelsey lives large with a spacious kitchen, dining and family room combination as well as a large living room.

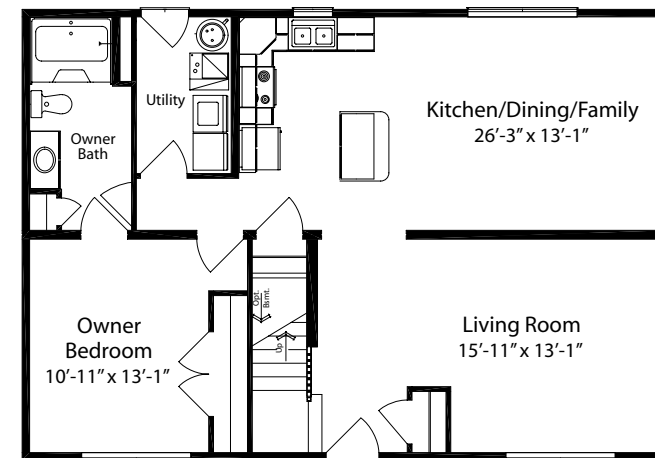
Classic Collection

Kenton

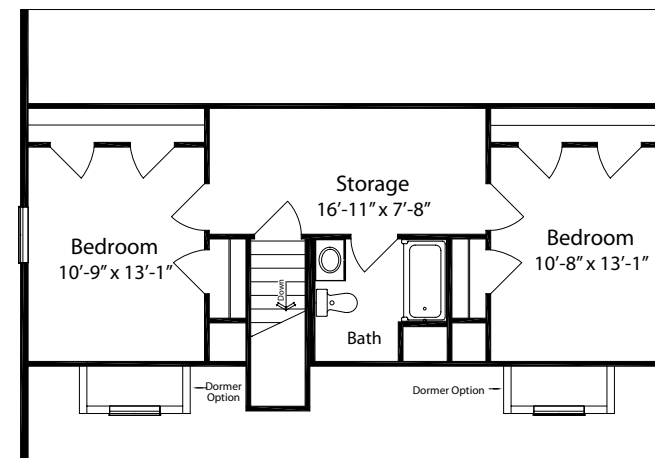


Renderings depict optional features.

First Floor



Suggested Second Floor
(All work performed on-site by others)



Style

Cape Cod

Total Square Feet

1,726

(1,105 first floor, 621 second floor)

Bedrooms

3 (with suggested second floor)

Baths

2 (with suggested second floor)

Footprint

40' x 28'

K 2840 1 1 (B) STD

Smartly designed to accommodate a growing family, the Kenton has optional bedroom and bath space on the second floor that you can finish when you need it. You'll enjoy summer nights outside when you choose the optional covered porch.



Classic Collection

Senna

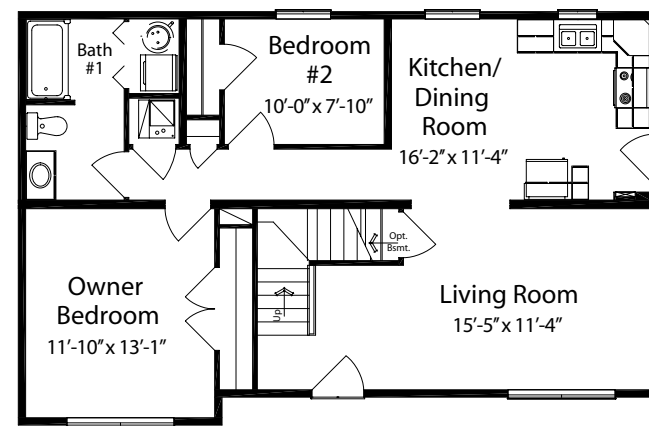
Classic Collection

Bayshore

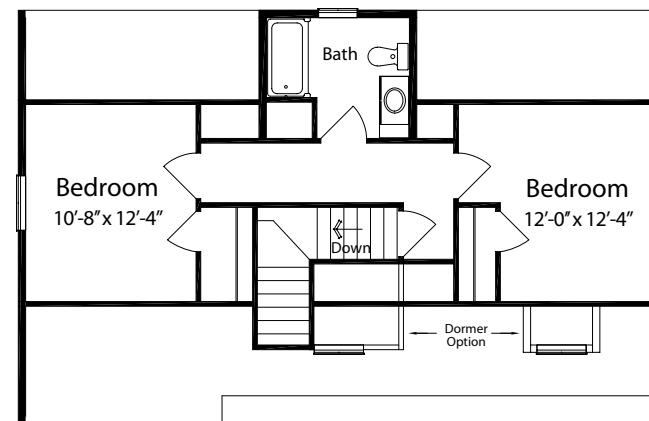


Renderings depict optional features.

First Floor



Suggested Second Floor
(All work performed on-site by others)



Style

Cape Cod

Total Square Feet

1,524

(987 first floor, 537 second floor)

Bedrooms

4 (with suggested second floor)

Baths

2 (with suggested second floor)

Footprint

40' x 26'

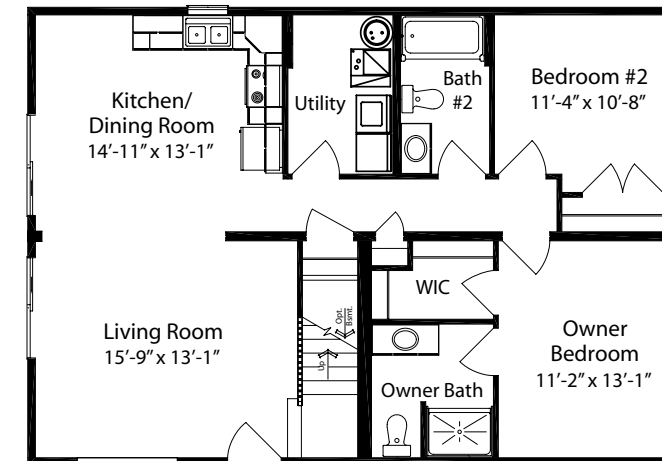
SOAC 2640 2 1 (B) STD

The Senna is a compact cape that looks great in the city or in a country setting. You'll enjoy relaxing on the optional porch after a day at the office or in the garden. The Senna offers a lot of home in a space saving floor plan.

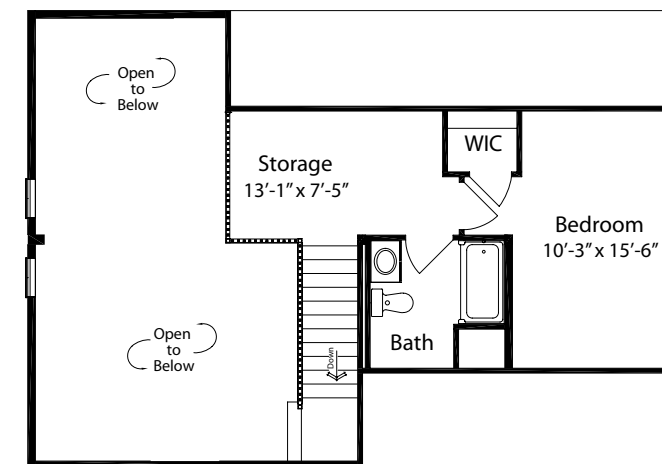


Renderings depict optional features.

First Floor



Suggested Second Floor
(All work performed on-site by others)



Style

Cape Cod

Total Square Feet

1,495

(1,105 first floor, 390 second floor)

Bedrooms

3 (with suggested second floor)

Baths

2.75 (with suggested second floor)

Footprint

40' x 28'

B 2840 2 1.75 (B) STD



Classic Collection

Many layout selections available.



Kenton



Bayshore



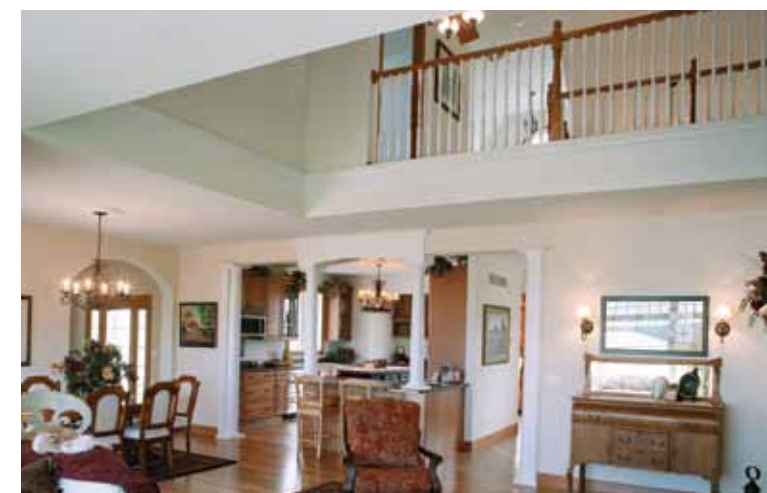
This page: Kenton exterior and interiors



Kelsey



Kea



As a member of the U.S. Green Building Council, All American Homes® is dedicated to sustainable

building design and construction. Unlike ordinary homes that are built on-site, our



environmentally controlled facilities allow us to preserve energy and resources. With LEED accredited professionals on staff and



certification to build ENERGY STAR® ready homes, we know

what it takes to be truly green – from your floors to your rooftop.





All American Homes Construction Facilities

Milliken, Colorado • 3333 East Center Drive • **Milliken, CO 80543 • Phone: 970.587.0544**

Decatur, Indiana • 1418 South 13th Street • **Decatur, IN 46733 • Phone: 866.299.0680**

Dyersville, Iowa • 1551 15th Avenue SE • **Dyersville, IA 52040 • Phone: 800.992.9013**

Rutherfordton, North Carolina • 2015 US 221S • **Rutherfordton, NC 28139 • Phone: 888.283.7908**

Rocky Mount, Virginia • 260 Weaver Street • **Rocky Mount, VA 24151 • Phone: 888.283.7908**

To locate an independent All American Homes builder near you,
visit www.allamericanhomes.com.