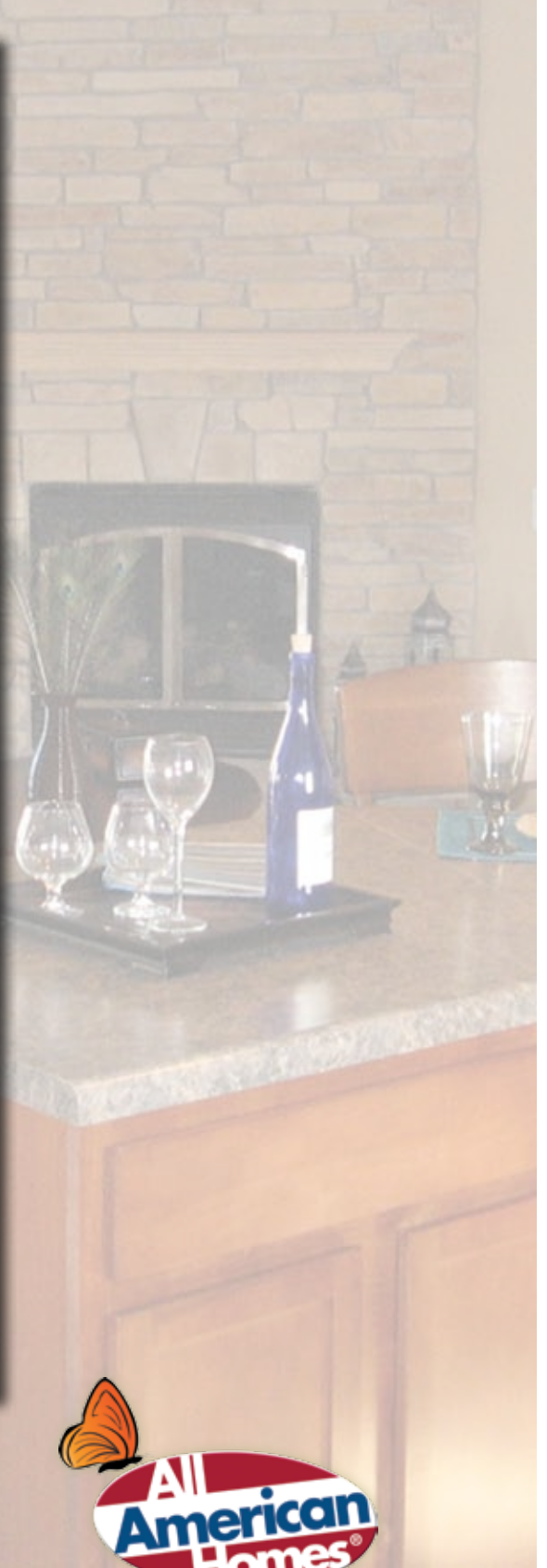


Classic Ranch Collection



The timeless appeal of CLASSIC RANCH



Shown on front cover:
Andrews Exterior/Interior

Shown on this page:
Andrews Interiors

The Classic Ranch Collection offers simple and open floorplan options with ample living and storage space. The casual style of the ranch creates an intimate feel allowing rooms to flow into one another.

Classic Collection

Manchester II



Renderings depict optional features.

Style
Ranch

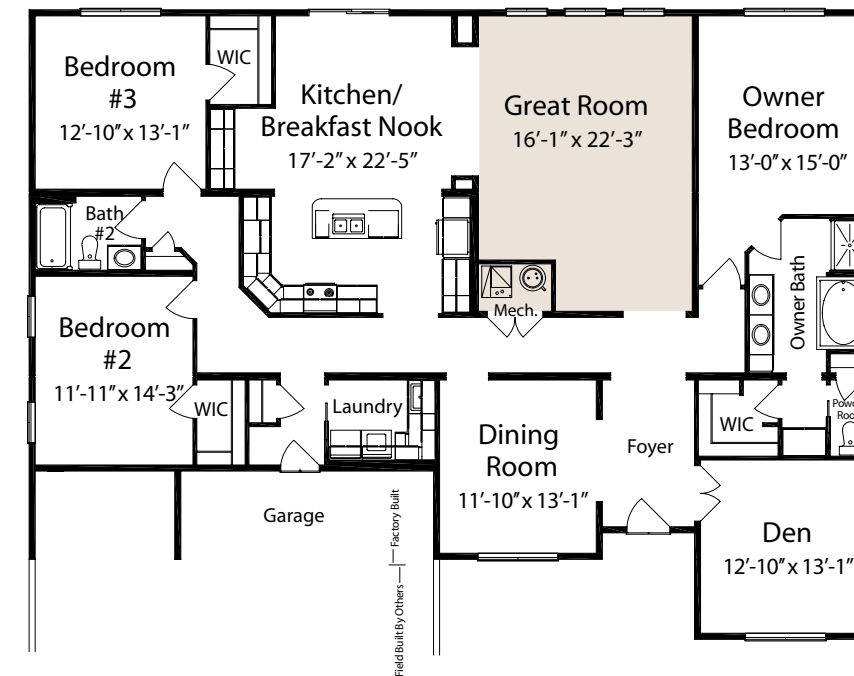
Total Square Feet
2,522

Bedrooms
3

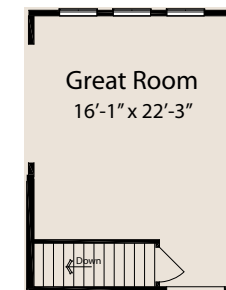
Baths
2

Footprint
64' x 63'

M 4864 3 2 (B) STD



Basement Option



The Manchester II offers ample living space. A highlight of this floorplan is the den tucked away at the front corner of the house. The kitchen layout with center island and cozy breakfast nook is the heart of the home.



Classic Collection

Manchester



Renderings depict optional features.

Style
Ranch

Total Square Feet
2,260

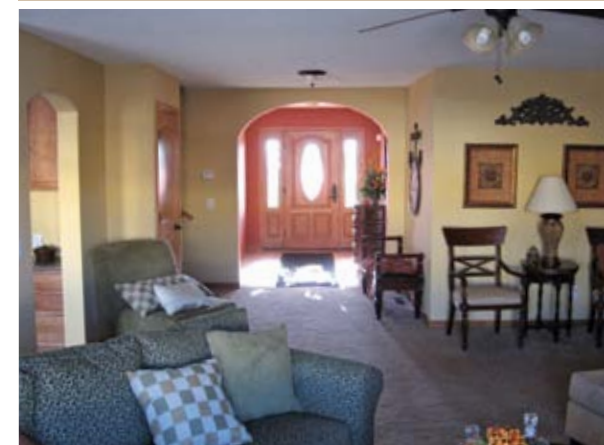
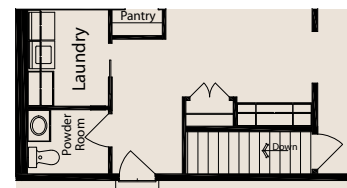
Bedrooms
3

Baths
2.5

Footprint
62' x 53'

M 4462 3 2.5 (B) STD

Basement Option



Classic Collection

Garnet



Renderings depict optional features.

Style
Ranch

Total Square Feet
2,225

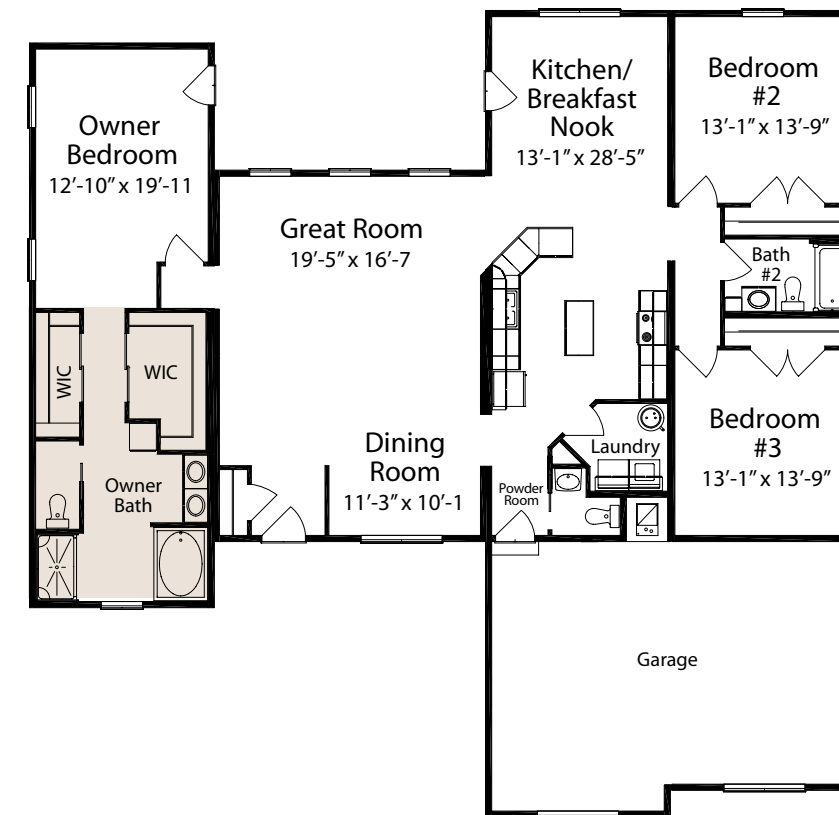
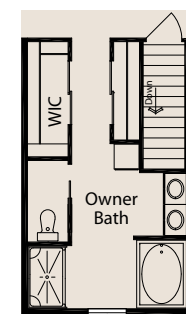
Bedrooms
3

Baths
2.5

Footprint
60' x 62'

GE 6260 3 2.5 SB 2CSG (B) STD

Basement Option



Classic Collection

Garrison

Classic Collection

Gentry



Renderings depict optional features.

Style
Ranch

Total Square Feet
2,168

Bedrooms
4

Baths
2

Footprint
64' x 46'

G 4664 3 2 (B) STD



Renderings depict optional features.

Style
Ranch

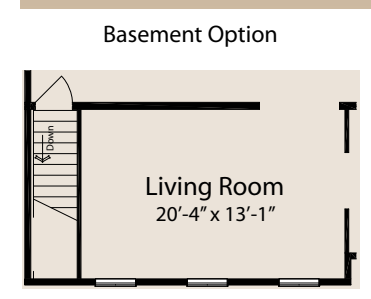
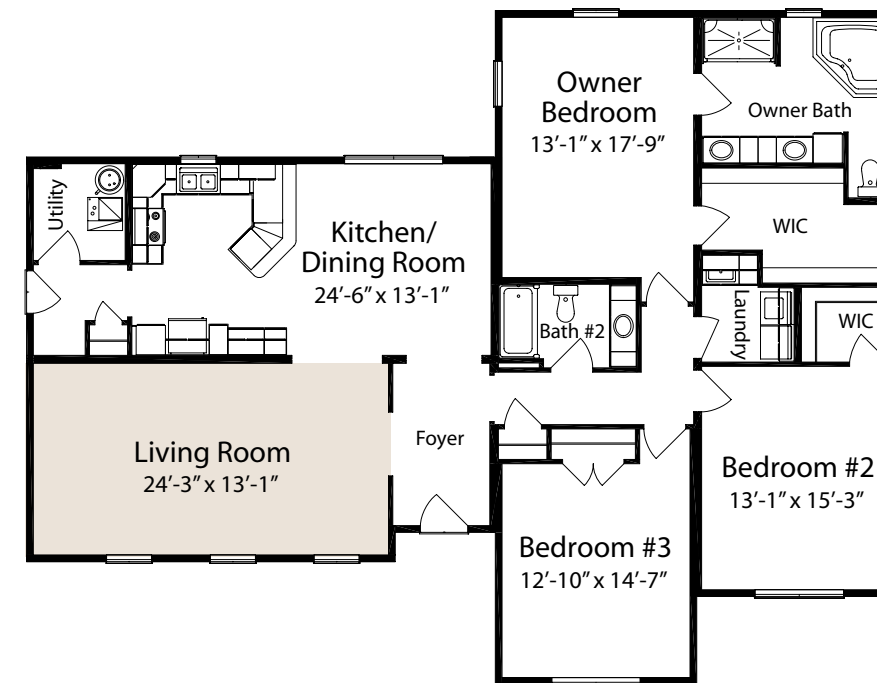
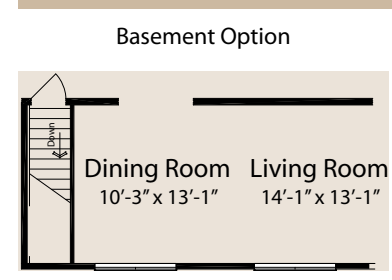
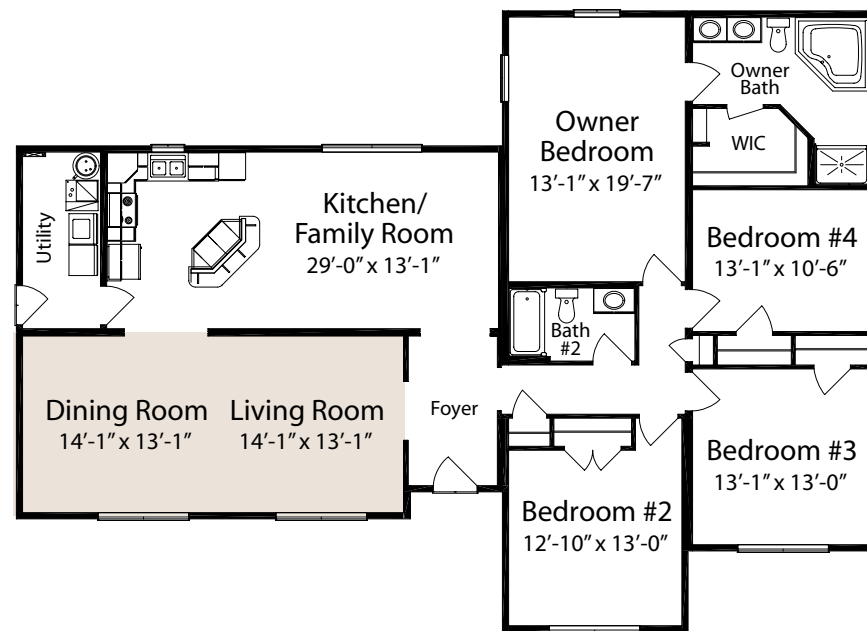
Total Square Feet
2,058

Bedrooms
3

Baths
2

Footprint
60' x 46'

G 4660 3 2 (B) STD



Classic Collection

Asbury



Renderings depict optional features.

Style
Ranch

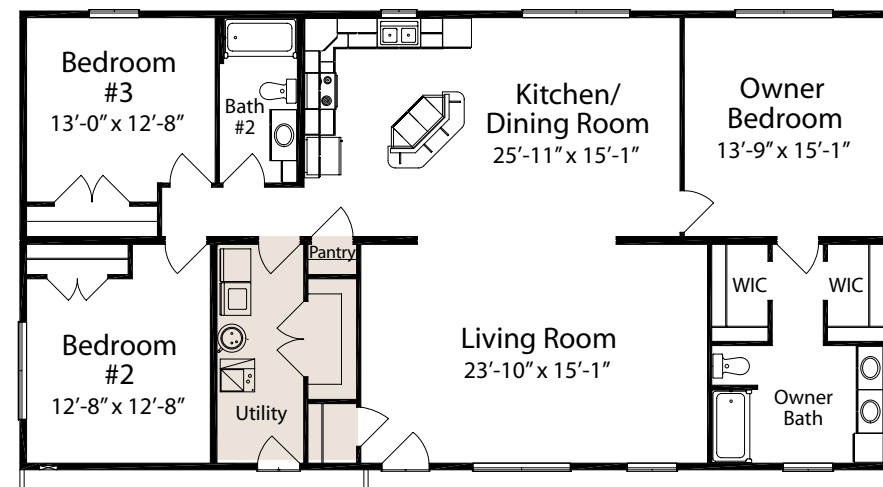
Total Square Feet
1,898

Bedrooms
3

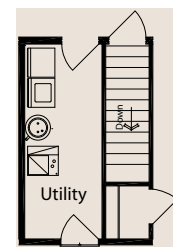
Baths
2

Footprint
60' x 32'

M FG 3260 3 2 SB RK (B) STD



Basement Option



At 32-foot wide, large bedrooms and a wonderful open kitchen/dining and living room make for plenty of space for everyone. The island countertop in the kitchen is a handy place for a quick meal or snack.

Classic Collection

Grayson



Renderings depict optional features.

Style
Ranch

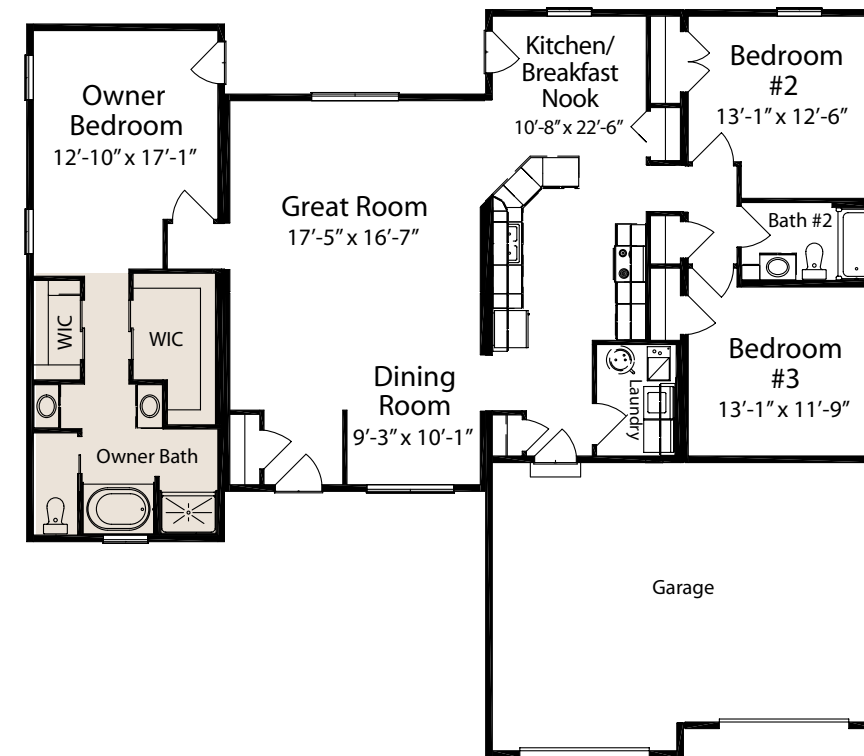
Total Square Feet
1,867

Bedrooms
3

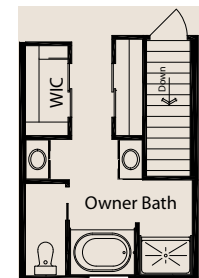
Baths
2

Footprint
52' x 60'

GE 6052 3 2 SB 2CFG (B) STD



Basement Option



Classic Collection

Gibson



Renderings depict optional features.

Style
Ranch

Total Square Feet
1,813

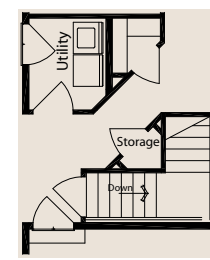
Bedrooms
3

Baths
2

Footprint
56' x 62'

GE 6255 3 2 2 CFG (B) STD

Basement Option



Classic Collection

Allister



Renderings depict optional features.

Style
Ranch

Total Square Feet
1,771

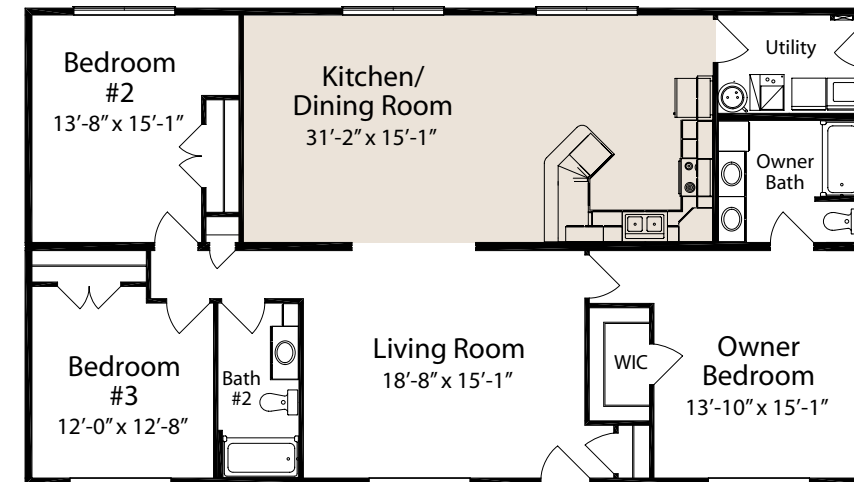
Bedrooms
3

Baths
2

Footprint
56' x 32'

M EG 3256 3 2 SB (B) STD

Basement Option



At 32-feet wide, the large rooms in the Allister make this floor plan ideal for families. Plenty of room in both floor space and closets enhance the appeal of the Allister.



Classic Collection

Lakewood



Renderings depict optional features.

Style
Ranch

Total Square Feet
1,770

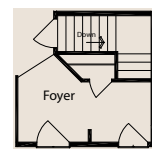
Bedrooms
3

Baths
2

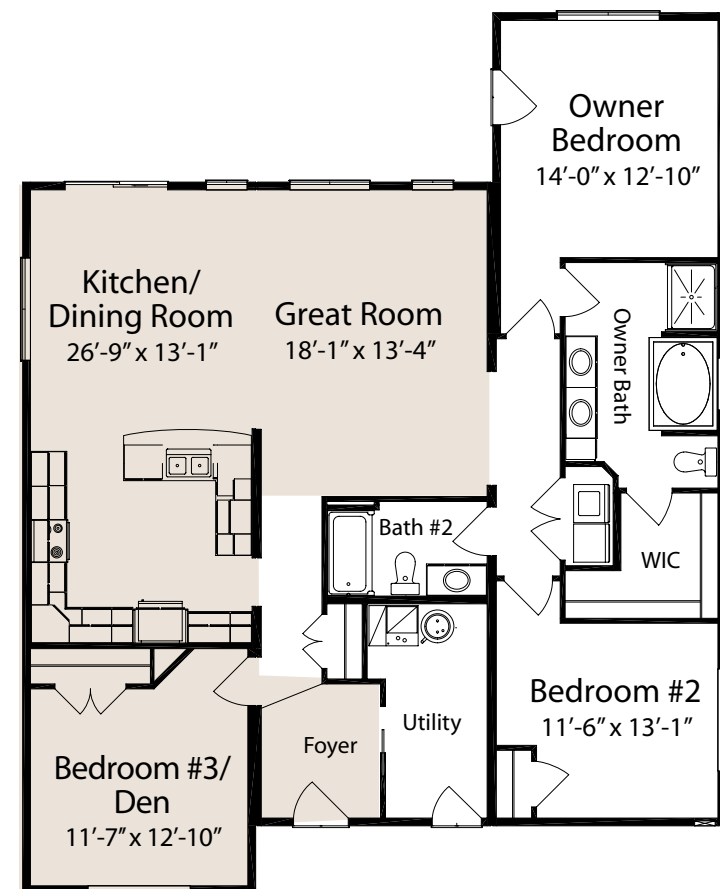
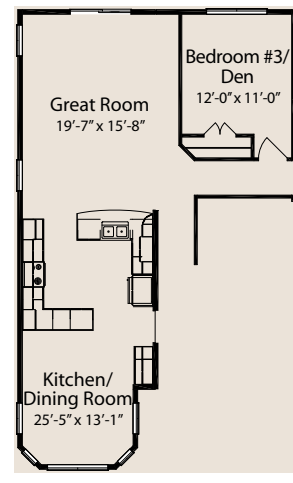
Footprint
42' x 52'

L 5242 3 2 (B) STD

Basement Option



Bay Kitchen Option



Classic Collection

Albany



Renderings depict optional features.

Style
Ranch

Total Square Feet
1,658

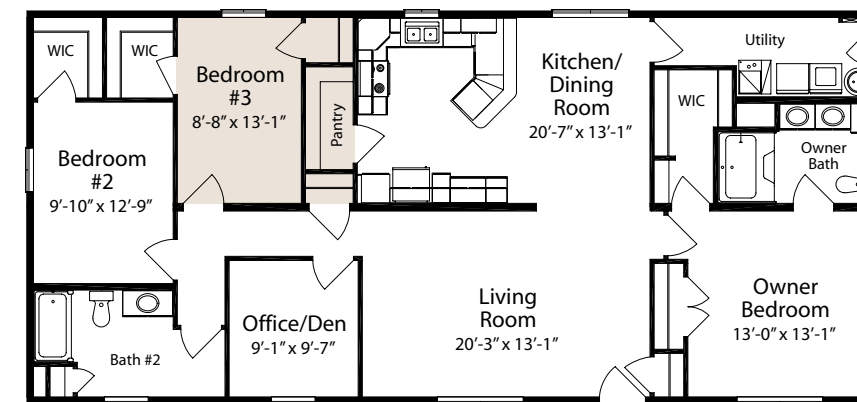
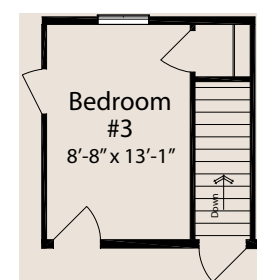
Bedrooms
3

Baths
2

Footprint
60' x 28'

M 2860 3 2 SB RK D (B) STD

Basement Option



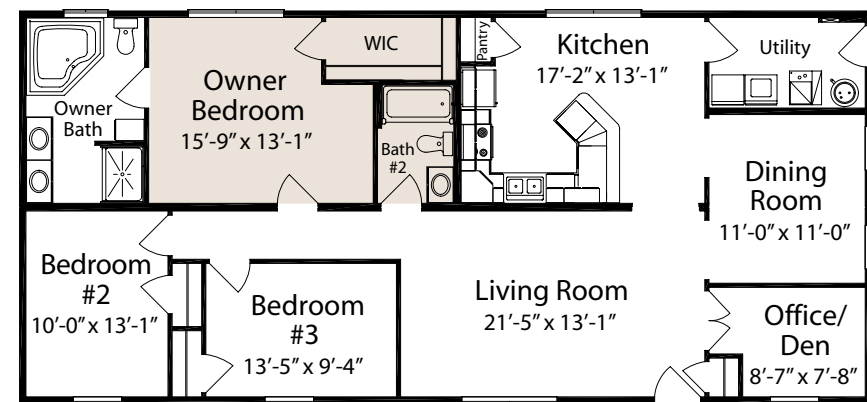
The Albany offers a den to the classic three bedroom, two bath ranch. Lots of kitchen storage with the pantry and cabinet layout and a spacious walk-in closet off the owner bedroom provides ample storage and livability.



Classic Collection



Renderings depict optional features.



Montgomery

Style
Ranch

Total Square Feet
1,658

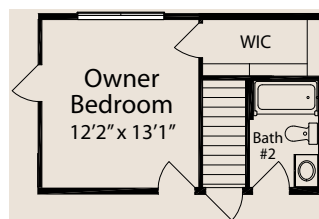
Bedrooms
3

Baths
2

Footprint
60' x 28'

M 2860 3 2 D (B) STD

Basement Option

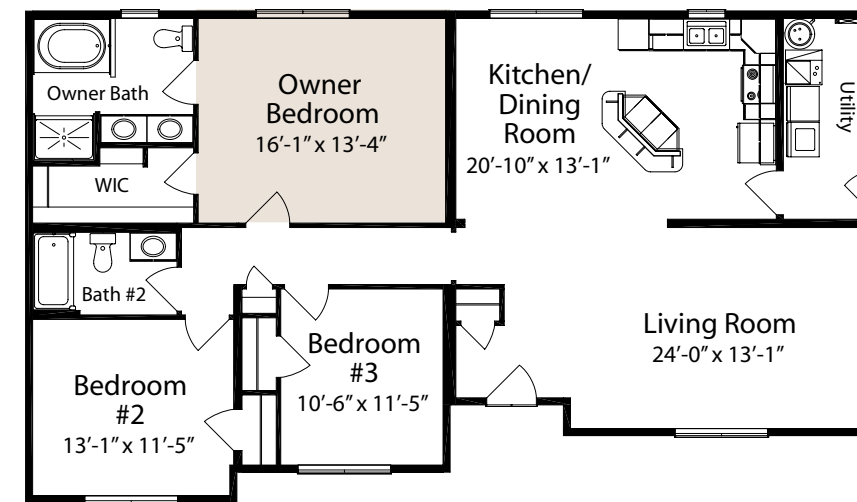


The Montgomery is a three bedroom, two bath ranch that adds a dining room and den to create spaces for work, study and formal dinners. A large owner bathroom with corner tub and double sinks creates accommodating private areas.

Classic Collection



Renderings depict optional features.



Gabriel

Style
Ranch

Total Square Feet
1,615

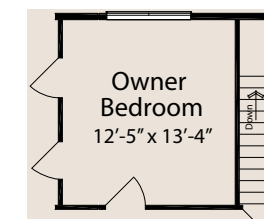
Bedrooms
3

Baths
2

Footprint
56' x 32'

G 3256 3 2 (B) STD

Basement Option



Classic Collection

Alden



Renderings depict optional features.

Style
Ranch

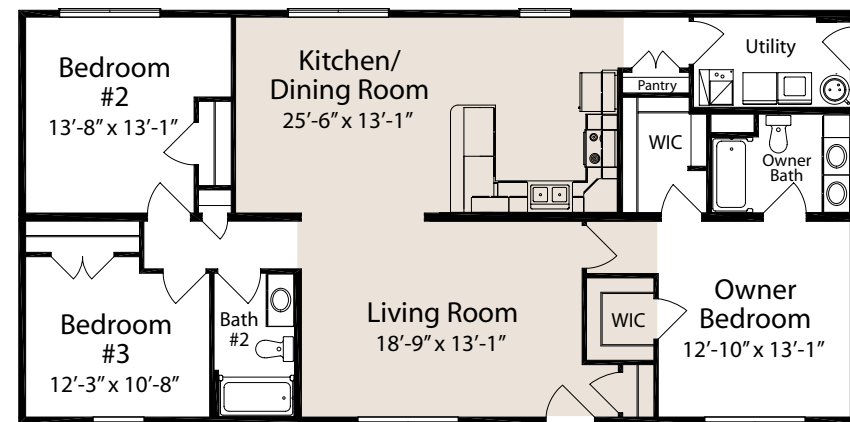
Total Square Feet
1,547

Bedrooms
3

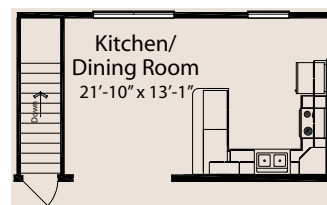
Baths
2

Footprint
56' x 28'

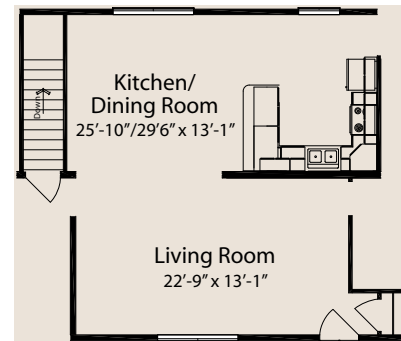
MEG 2856 3 2 SB (B) STD



Basement Option



Larger Kitchen and Living Room Option (available with or without basement)



Classic Collection

Andrews



Renderings depict optional features.

Style
Ranch

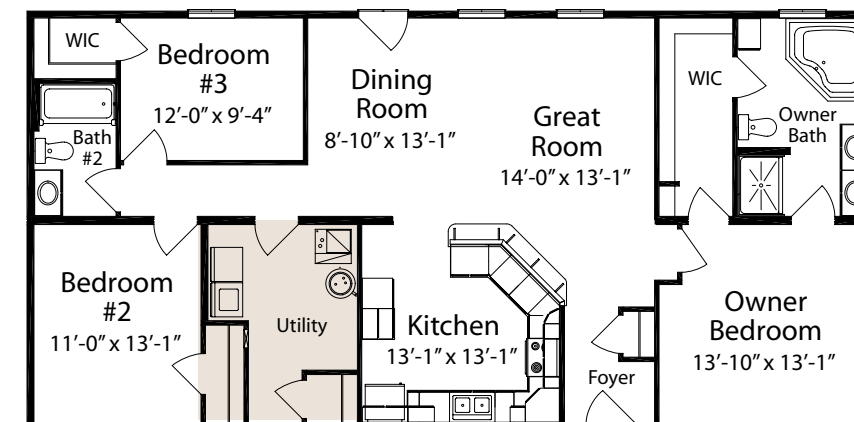
Total Square Feet
1,547

Bedrooms
3

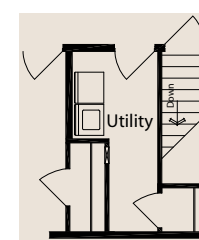
Baths
2

Footprint
56' x 28'

M 2856 3 2 SB FK (B) STD



Basement Option



Classic Collection

Merrill



Renderings depict optional features.

Style
Ranch

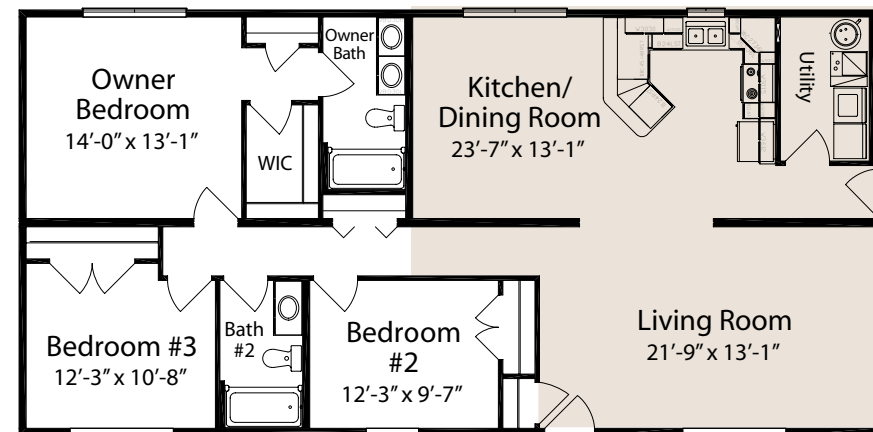
Total Square Feet
1,547

Bedrooms
3

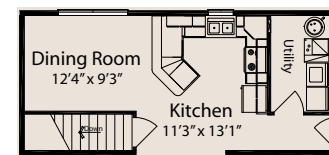
Baths
2

Footprint
56' x 28'

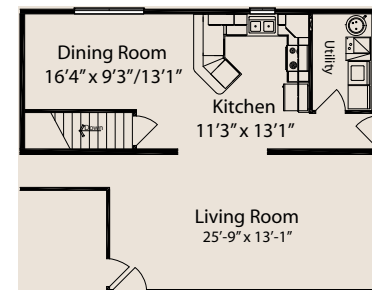
M 2856 3 2 EU (B) STD



Basement Option



Larger Kitchen and Living Room Option (available with or without basement)



Classic Collection

Stafford



Renderings depict optional features.

Style
Ranch

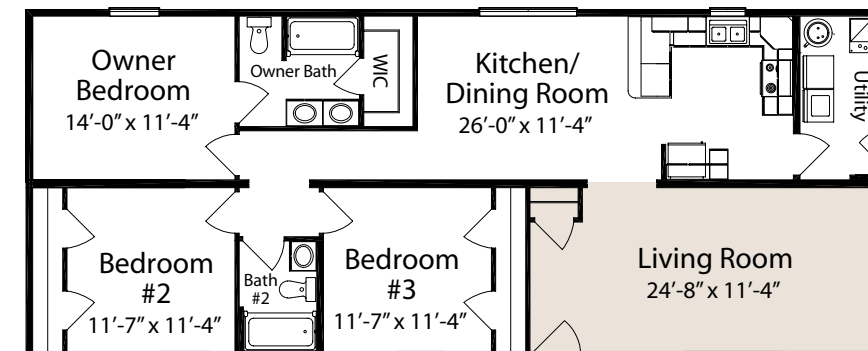
Total Square Feet
1,448

Bedrooms
3

Baths
2

Footprint
60' x 24'

SOAR 2460 3 2 EU (B) STD



Basement Option



The Stafford features a nice sized living room separate from the kitchen/dining area. Ample closet storage is available in all bedrooms along with a walk-in owner closet.



Classic Collection

Skylar



Renderings depict optional features.

Style
Ranch

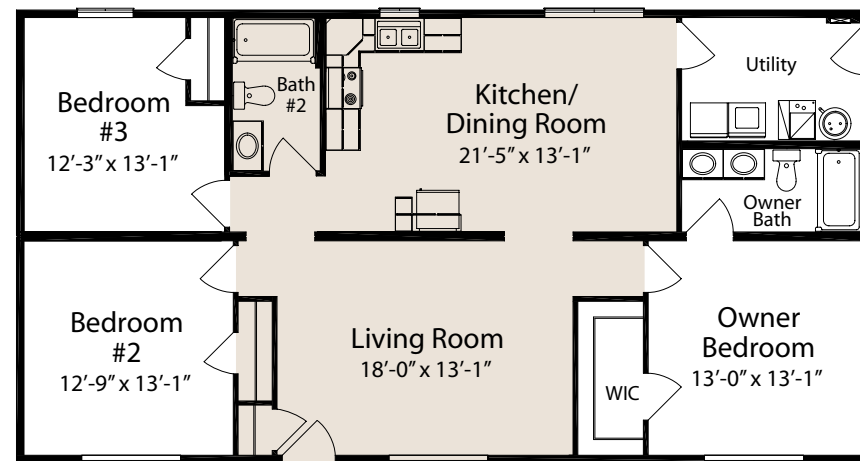
Total Square Feet
1,437

Bedrooms
3

Baths
2

Footprint
52' x 28'

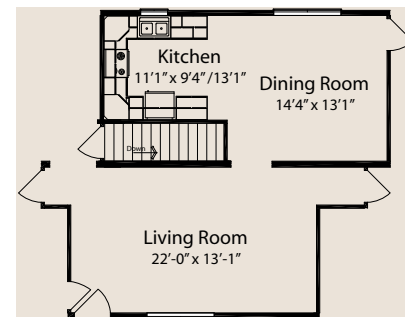
SOAR 2852 3 2 SB EU (B) STD



Basement Option



Larger Kitchen and Living Room Option (available with or without basement)



Classic Collection

Ashford



Renderings depict optional features.

Style
Ranch

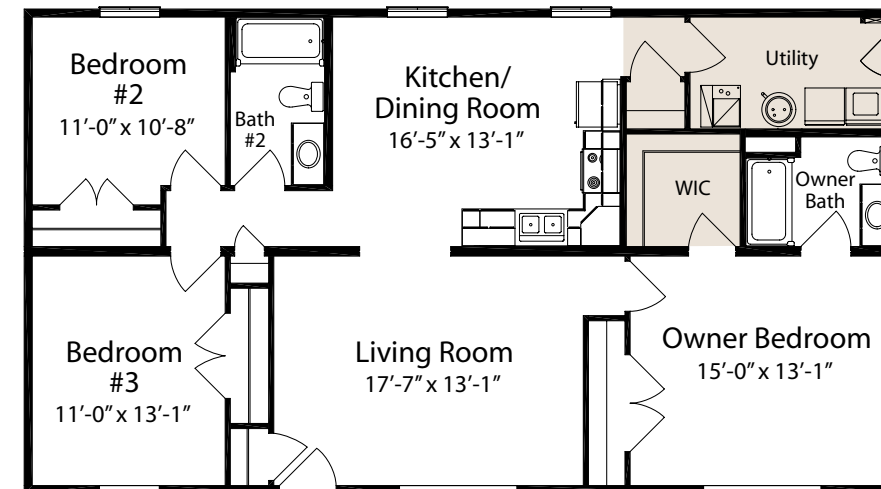
Total Square Feet
1,381

Bedrooms
3

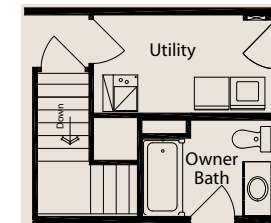
Baths
2

Footprint
50' x 28'

M EG 2850 3 2 SB (B) STD



Basement Option



This three bedroom ranch places the owner's bedroom with spacious walk-in closet and other bedrooms at opposite ends of the house for privacy. The utility area is conveniently located off the kitchen.



Classic Collection

Selwin



Renderings depict optional features.

Style
Ranch

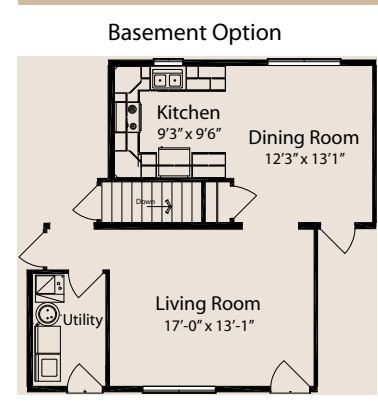
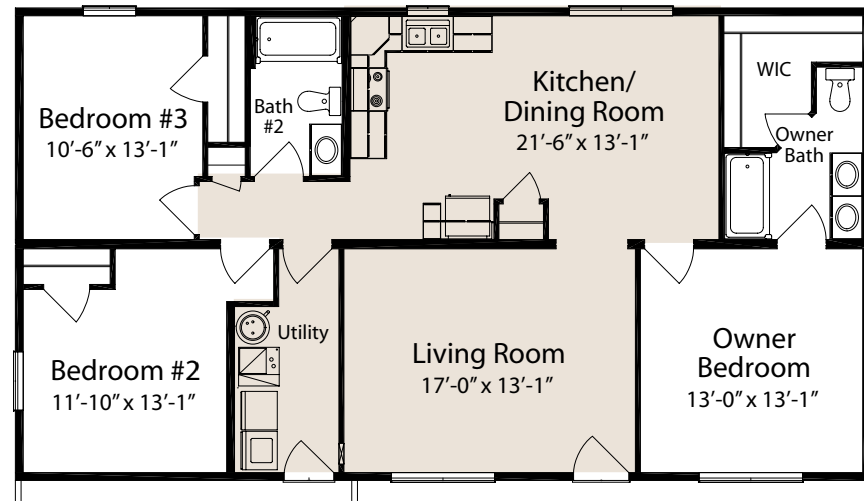
Total Square Feet
1,381

Bedrooms
3

Baths
2

Footprint
50' x 28'

SOAR FG 2850 3 2 (B) STD



The Selwin is a smart split bedroom ranch with dual sinks and walk-in closets in the owner bath. The large kitchen/dining area make the heart of the home.

Classic Collection

Addison



Renderings depict optional features.

Style
Ranch

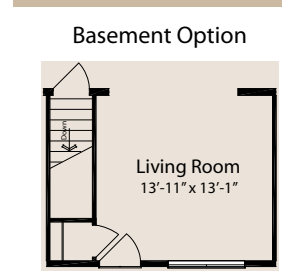
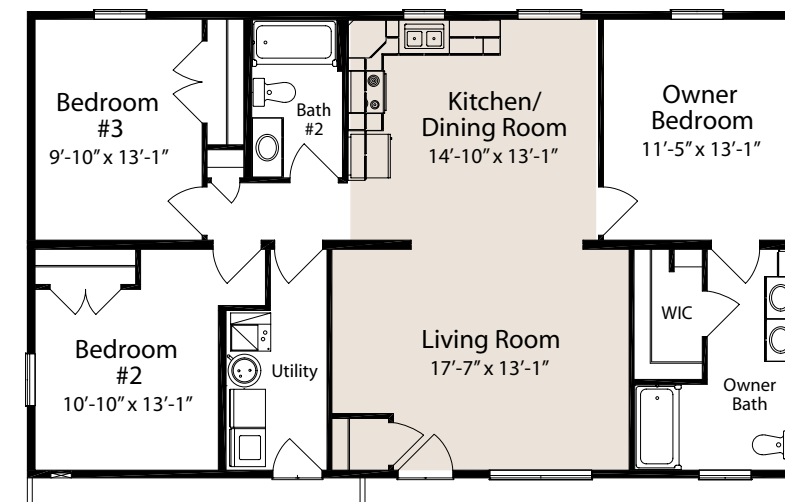
Total Square Feet
1,271

Bedrooms
3

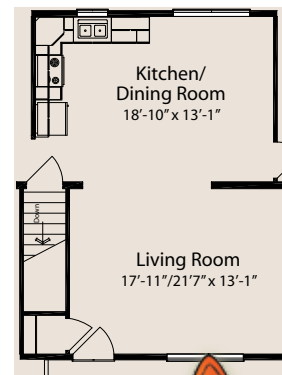
Baths
2

Footprint
46' x 28'

M 2846 3 2 SB RK FG (B) STD



Larger Kitchen and Living Room Option (available with or without basement)



Classic Collection

Marlie



Renderings depict optional features.

Style
Ranch

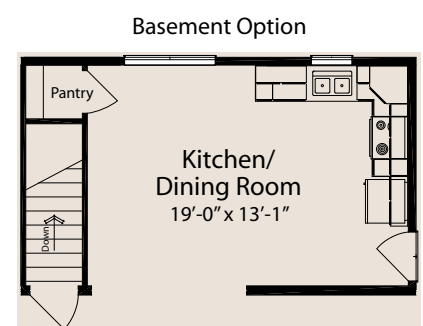
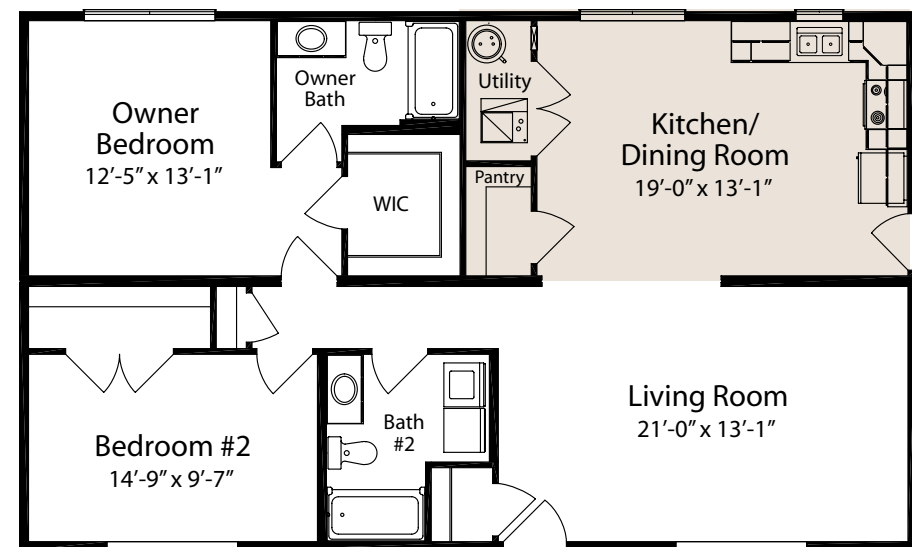
Total Square Feet
1,271

Bedrooms
2

Baths
2

Footprint
46' x 28'

M 2846 2 2 (B) STD



The two bedroom, two full bath layout of the Marlie add convenience to a smart floorplan. The large living room and kitchen/dining areas make for plenty of living space.

Classic Collection

Mayer



Renderings depict optional features.

Style
Ranch

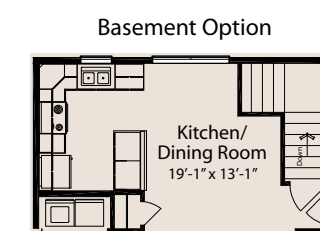
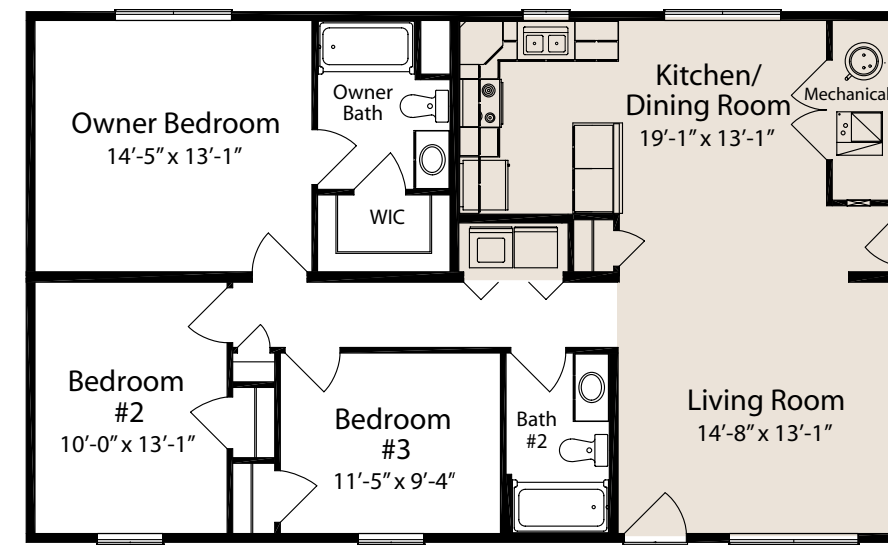
Total Square Feet
1,271

Bedrooms
3

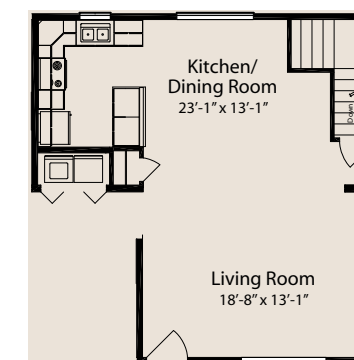
Baths
2

Footprint
46' x 28'

M 2846 3 2 EU (B) STD



Larger Kitchen and Living Room Option (available with or without basement)



Classic Collection

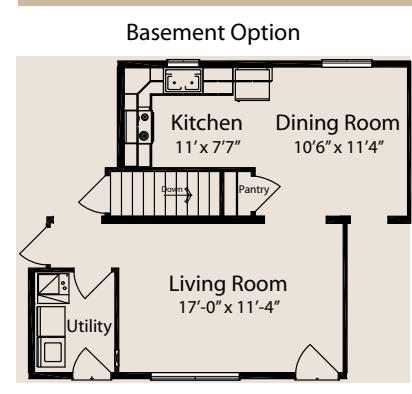
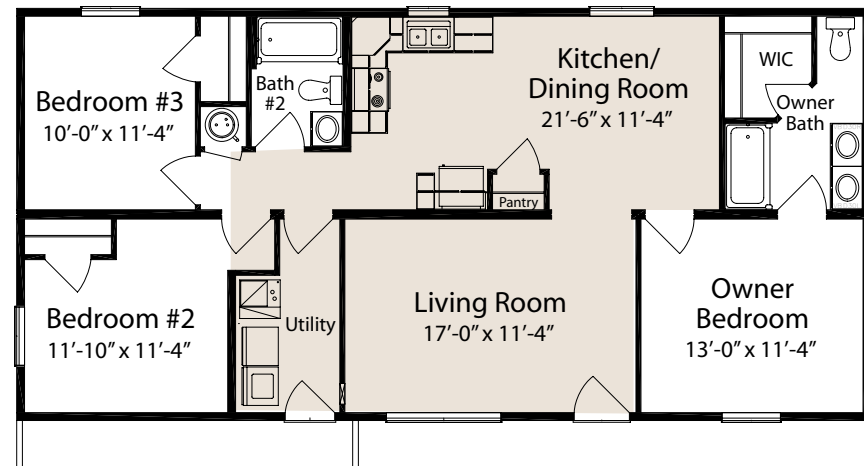
Saffron



Renderings depict optional features.

Style
Ranch
 Total Square Feet
1,206
 Bedrooms
3
 Baths
2
 Footprint
50' x 24'

SOAR FG 2450 3 2 SB (B) STD



Classic Collection

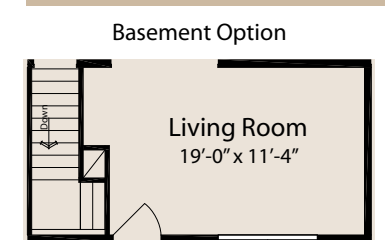
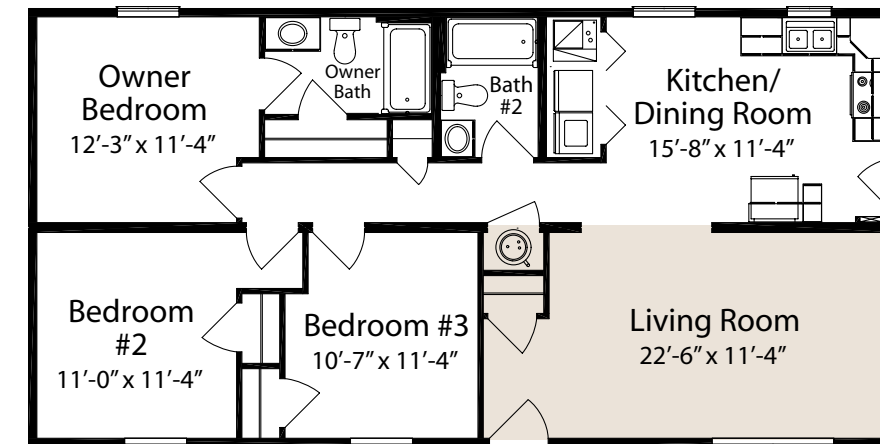
Sabrina



Renderings depict optional features.

Style
Ranch
 Total Square Feet
1,158
 Bedrooms
3
 Baths
2
 Footprint
48' x 24'

SOAR 2448 3 2 (B) STD



Waiting on a bathroom is a thing of the past in this smart three bedroom, two bath ranch. A nice sized living room and kitchen/dining area gives you room to relax after the workday.



Classic Collection

Mendel



Renderings depict optional features.

Style
Ranch

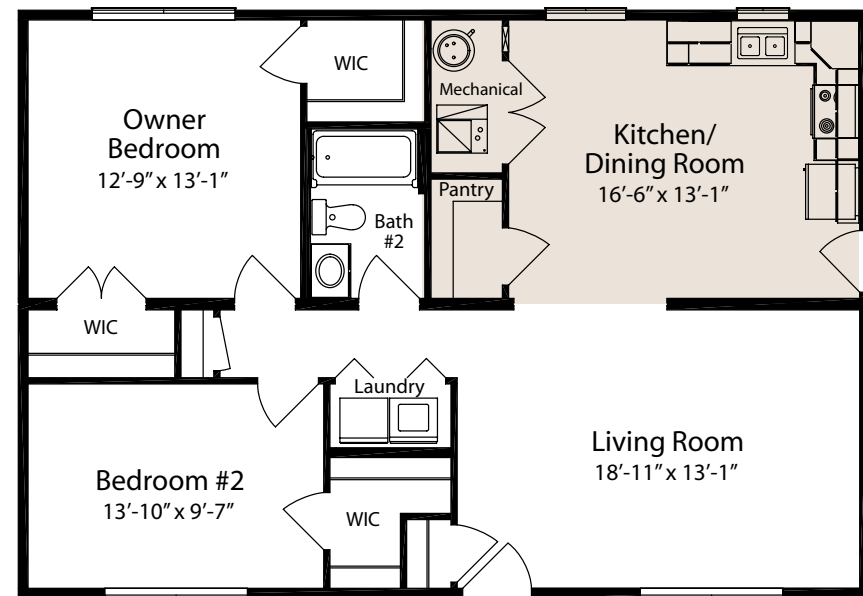
Total Square Feet
1,105

Bedrooms
2

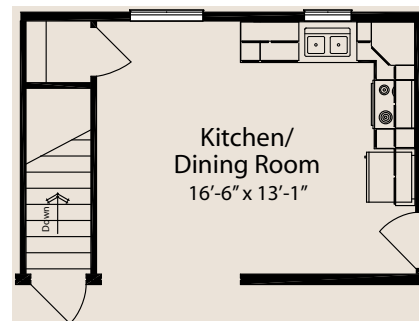
Baths
1

Footprint
40' x 28'

M2840 2 1 (B) STD



Basement Option



The Mendel is a compact home that boasts three walk-in closets. A large living room and kitchen/dining combination provide nice living space in a smaller home.

Classic Collection

Mya



Renderings depict optional features.

Style
Ranch

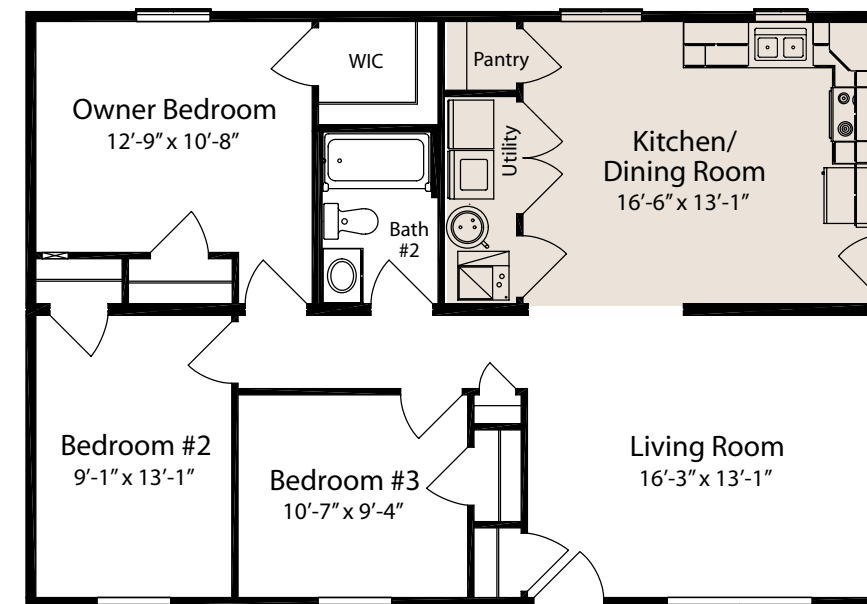
Total Square Feet
1,105

Bedrooms
3

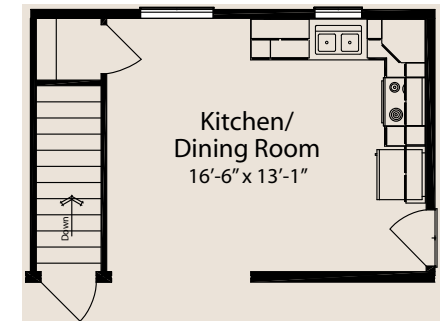
Baths
1

Footprint
40' x 28'

M 2840 3 1 (B) STD



Basement Option



The Mya features a large kitchen/dining area that is conveniently connected to the laundry area. The kitchen pantry also makes for easy storage.



Classic Collection

Senna

Classic Collection



Renderings depict optional features.

Style
Ranch

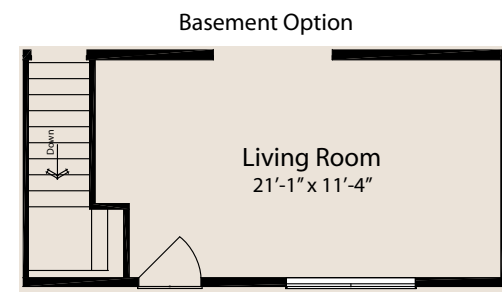
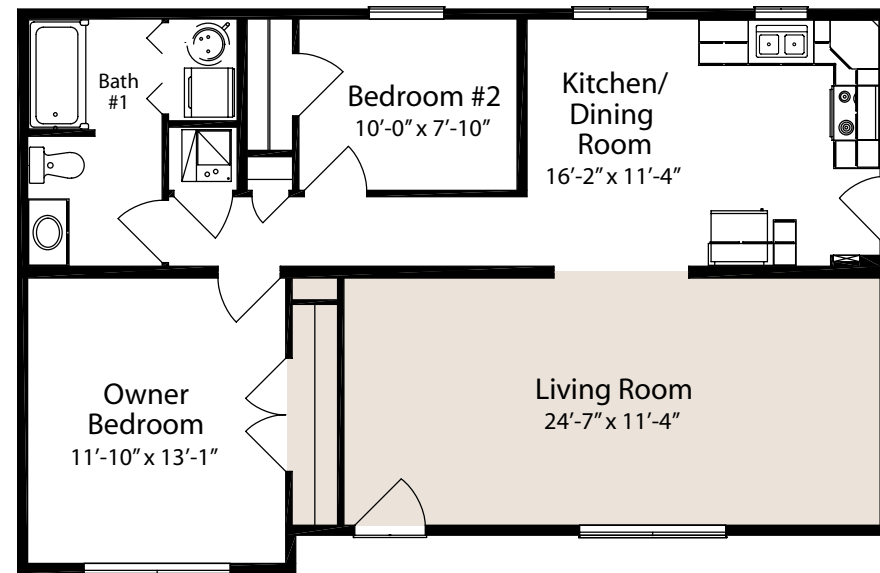
Total Square Feet
987

Bedrooms
2

Baths
1

Footprint
40' x 26'

SOAC 2640 2 1 (B) STD



Simple pleasures await you in the Senna. An oversized living room provides enough space for a large family gathering.

Many layout selections available.



Gabriel



Garnet



Garrison



Gentry

Shown below: Andrews interior



As a member of the U.S. Green Building Council, All American Homes® is dedicated to sustainable



building design and construction. Unlike ordinary homes that are built on-site, our environmentally controlled facilities allow us to preserve energy and resources. With LEED accredited professionals on staff and certification to build ENERGY STAR® ready homes, we know what it takes to be truly green – from your floors to your rooftop.





All American Homes Construction Facilities

Milliken, Colorado • 3333 East Center Drive • **Milliken, CO 80543 • Phone: 970.587.0544**

Decatur, Indiana • 1418 South 13th Street • **Decatur, IN 46733 • Phone: 866.299.0680**

Dyersville, Iowa • 1551 15th Avenue SE • **Dyersville, IA 52040 • Phone: 800.992.9013**

Rutherfordton, North Carolina • 2015 US 221S • **Rutherfordton, NC 28139 • Phone: 888.283.7908**

Rocky Mount, Virginia • 260 Weaver Street • **Rocky Mount, VA 24151 • Phone: 888.283.7908**

To locate an independent All American Homes builder near you,
visit www.allamericanhomes.com.