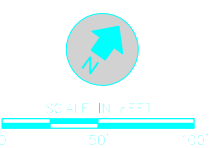




**KEY**

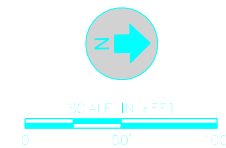
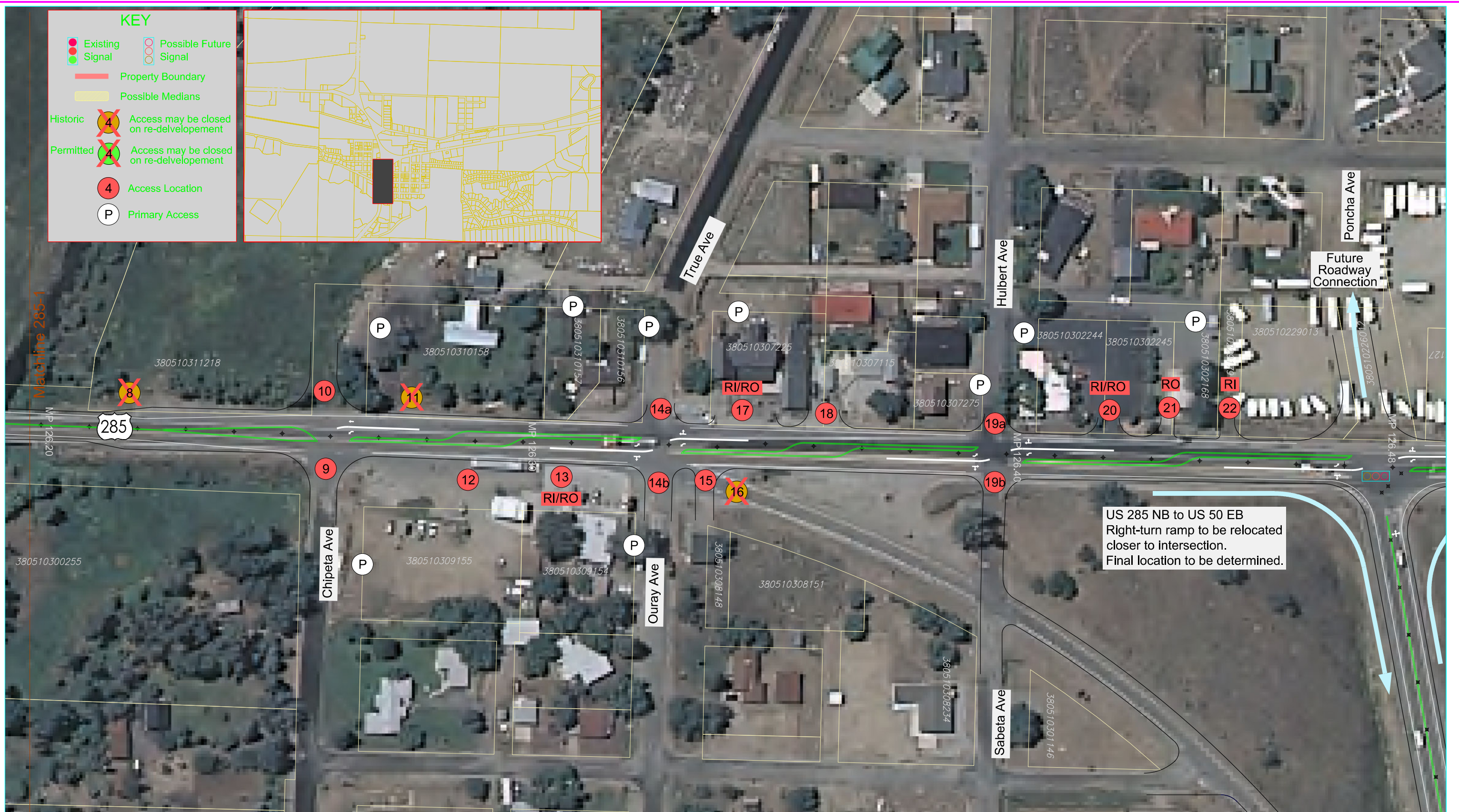
- Existing Signal
- Possible Future Signal
- Property Boundary
- Possible Medians
- Historic 4 Access may be closed on re-development
- Permitted 4 Access may be closed on re-development
- 4 Access Location
- P Primary Access



**US 50 / US 285 - PONCHA SPRINGS**  
**EXHIBIT B - ACCESS CONTROL PLAN ILLUSTRATED**

Scale	1"=100'	Date	3/13/12	Drawn by	KLH	Job #	112456		
								1	

**CDOT**  
 Region 5  
 US 50 - US 285  
 (Poncha Springs)  
**ACCESS CONTROL STUDY**

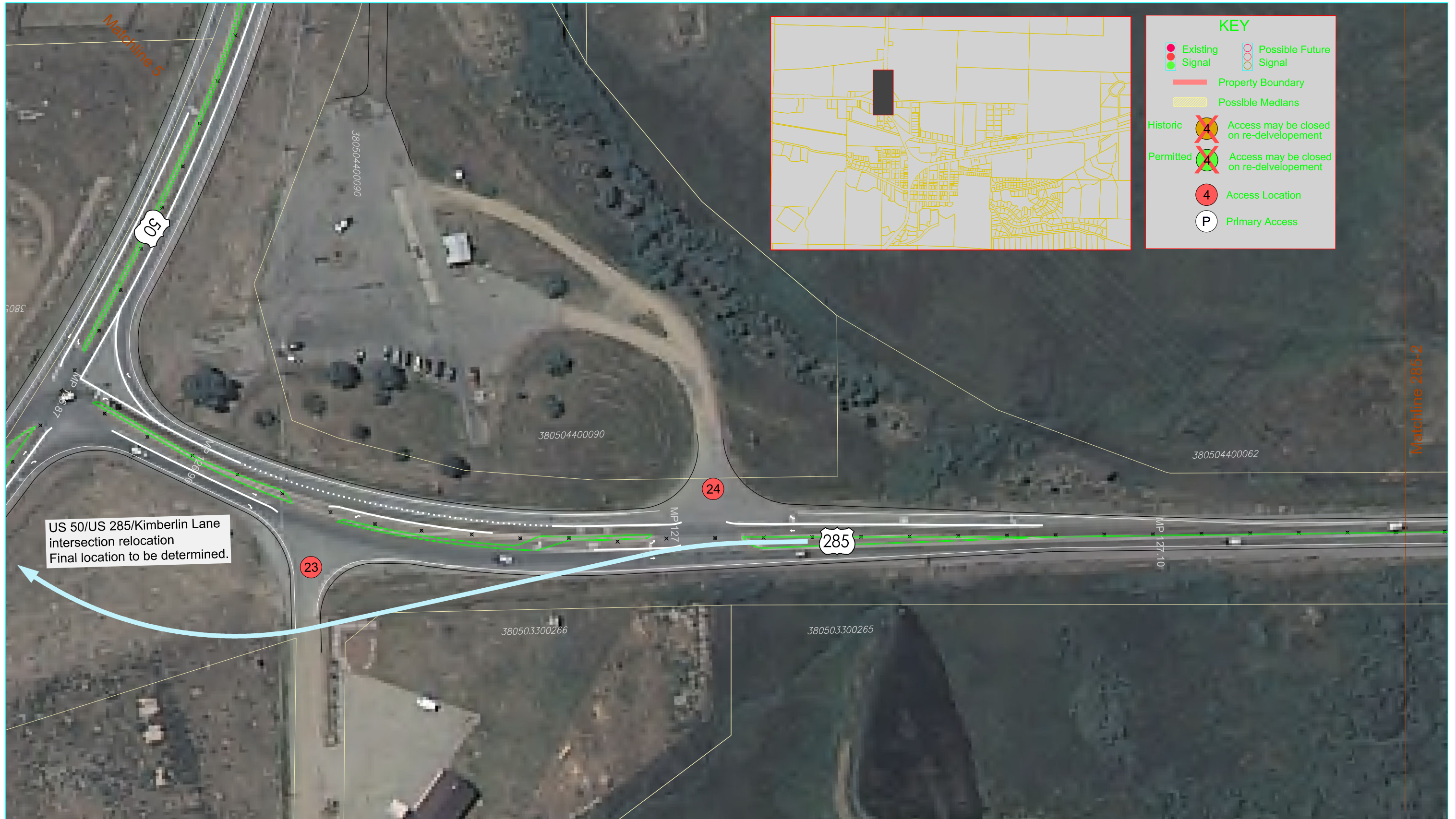


**US 50 / US 285 - PONCHA SPRINGS  
EXHIBIT B - ACCESS CONTROL PLAN ILLUSTRATED**

Scale	1"=100'	Date	3/13/12	Drawn by	KLH	Job #	112456	2
-------	---------	------	---------	----------	-----	-------	--------	---

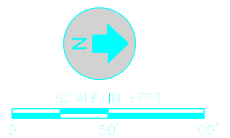


CDOT  
Region 5  
US 50 - US 285  
(Poncha Springs)  
ACCESS CONTROL STUDY



**KEY**

- Existing Signal
- Possible Future Signal
- Property Boundary
- Possible Medians
- Historic 4 Access may be closed on re-development
- Permitted 4 Access may be closed on re-development
- 4 Access Location
- P Primary Access



**US 50 / US 285 - PONCHA SPRINGS**  
**EXHIBIT B - ACCESS CONTROL PLAN ILLUSTRATED**

Scale	1"=100'	Date	3/13/12	Drawn by	KLH	Job #	112456	3
-------	---------	------	---------	----------	-----	-------	--------	---

CDOT  
Region 5  
US 50 - US 285  
(Poncha Springs)  
ACCESS CONTROL STUDY



**KEY**

- Existing Signal
- Signal
- Property Boundary
- Possible Medians
- 4 Historic Access may be closed on re-development
- 4 Permitted Access may be closed on re-development
- 4 Access Location
- P Primary Access
- Possible Future Signal

Matchline 285-2

380504400116

MP 127.20

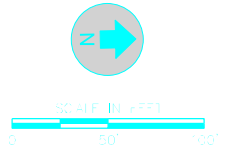
MP 127.24

285

MP 127.24  
END OF US 285 ACP

380503300265

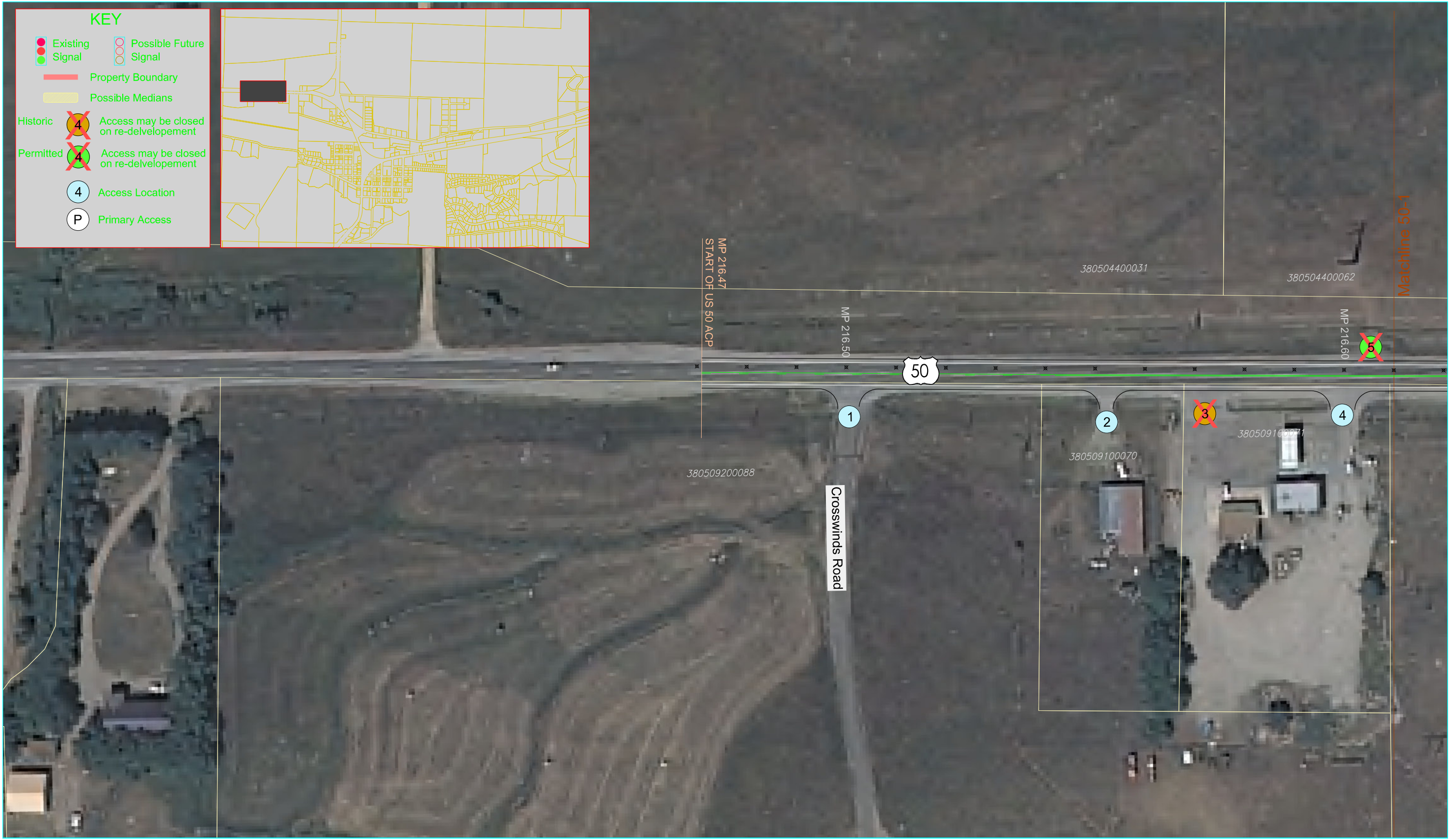
380503300041



**US 50 / US 285 - PONCHA SPRINGS  
EXHIBIT B - ACCESS CONTROL PLAN ILLUSTRATED**

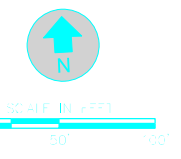
Scale	1"=100'	Date	3/13/12	Drawn by	KLH	Job #	112456		
								4	

CDOT  
 Region 5  
 US 50 - US 285  
 (Poncha Springs)  
**ACCESS CONTROL STUDY**



**KEY**

- Existing Signal
- Possible Future Signal
- Property Boundary
- Possible Medians
- Historic Access may be closed on re-development
- Permitted Access may be closed on re-development
- Access Location
- Primary Access



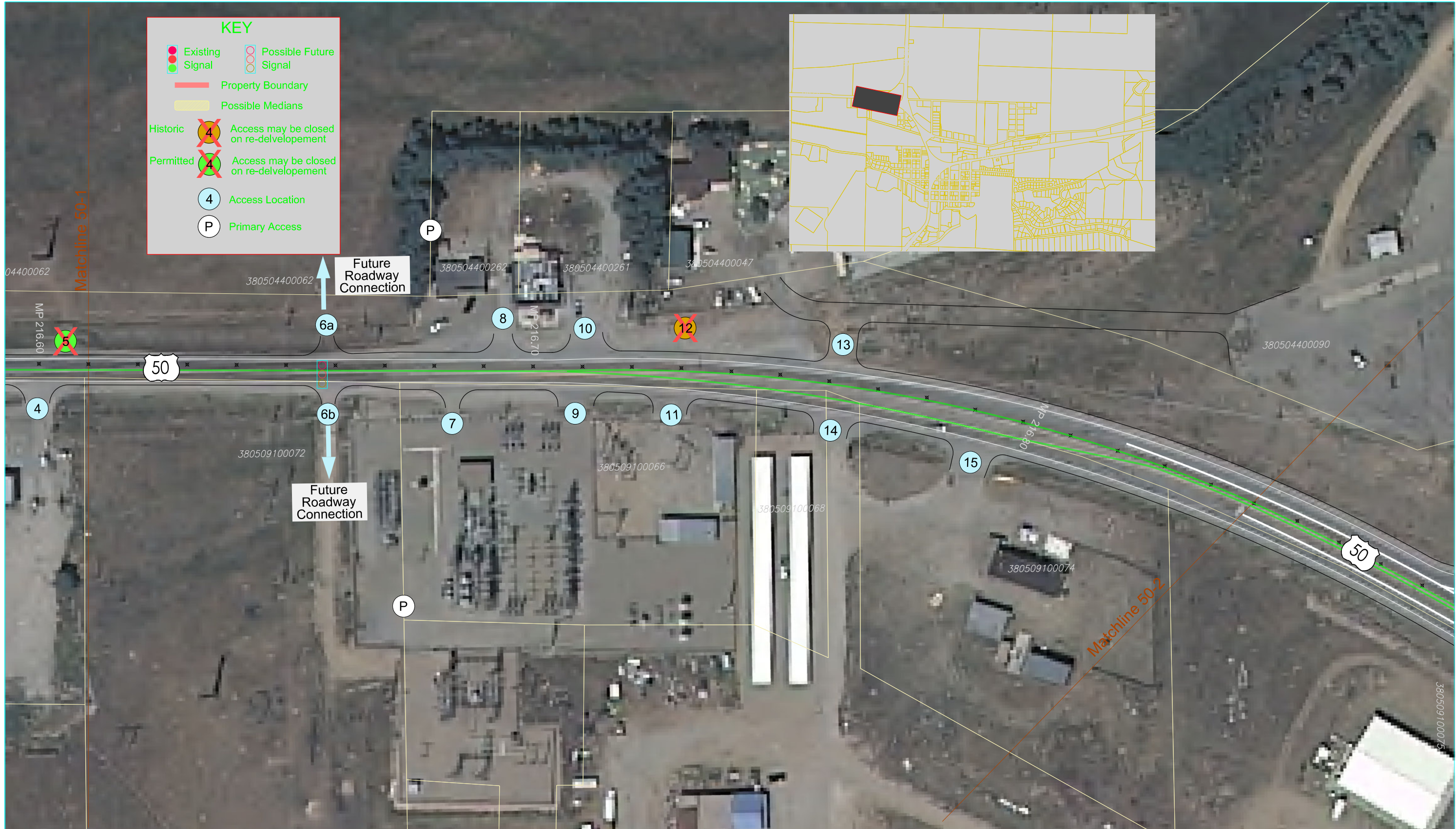
**US 50 / US 285 - PONCHA SPRINGS  
EXHIBIT B - ACCESS CONTROL PLAN ILLUSTRATED**

Scale	1"=100'	Date	3/13/12	Drawn by	KLH	Job #	112456	5
-------	---------	------	---------	----------	-----	-------	--------	---

CDOT  
Region 5  
US 50 - US 285  
(Poncha Springs)  
ACCESS CONTROL STUDY

**KEY**

- Existing Signal
- Possible Future Signal
- Property Boundary
- Possible Medians
- Historic 4 Access may be closed on re-delvelopment
- Permitted 4 Access may be closed on re-delvelopment
- 4 Access Location
- P Primary Access



**US 50 / US 285 - PONCHA SPRINGS  
EXHIBIT B - ACCESS CONTROL PLAN ILLUSTRATED**

Scale	1"=100'	Date	3/13/12	Drawn by	KLH	Job #	112456		
								6	

**CDOT**  
 Region 5  
 US 50 - US 285  
 (Poncha Springs)  
**ACCESS CONTROL STUDY**



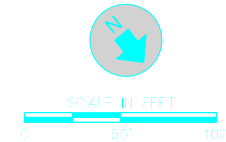


**KEY**

- Existing Signal
- Possible Future Signal
- Property Boundary
- Possible Medians
- Historic 4 Access may be closed on re-development
- Permitted 4 Access may be closed on re-development
- 4 Access Location
- P Primary Access



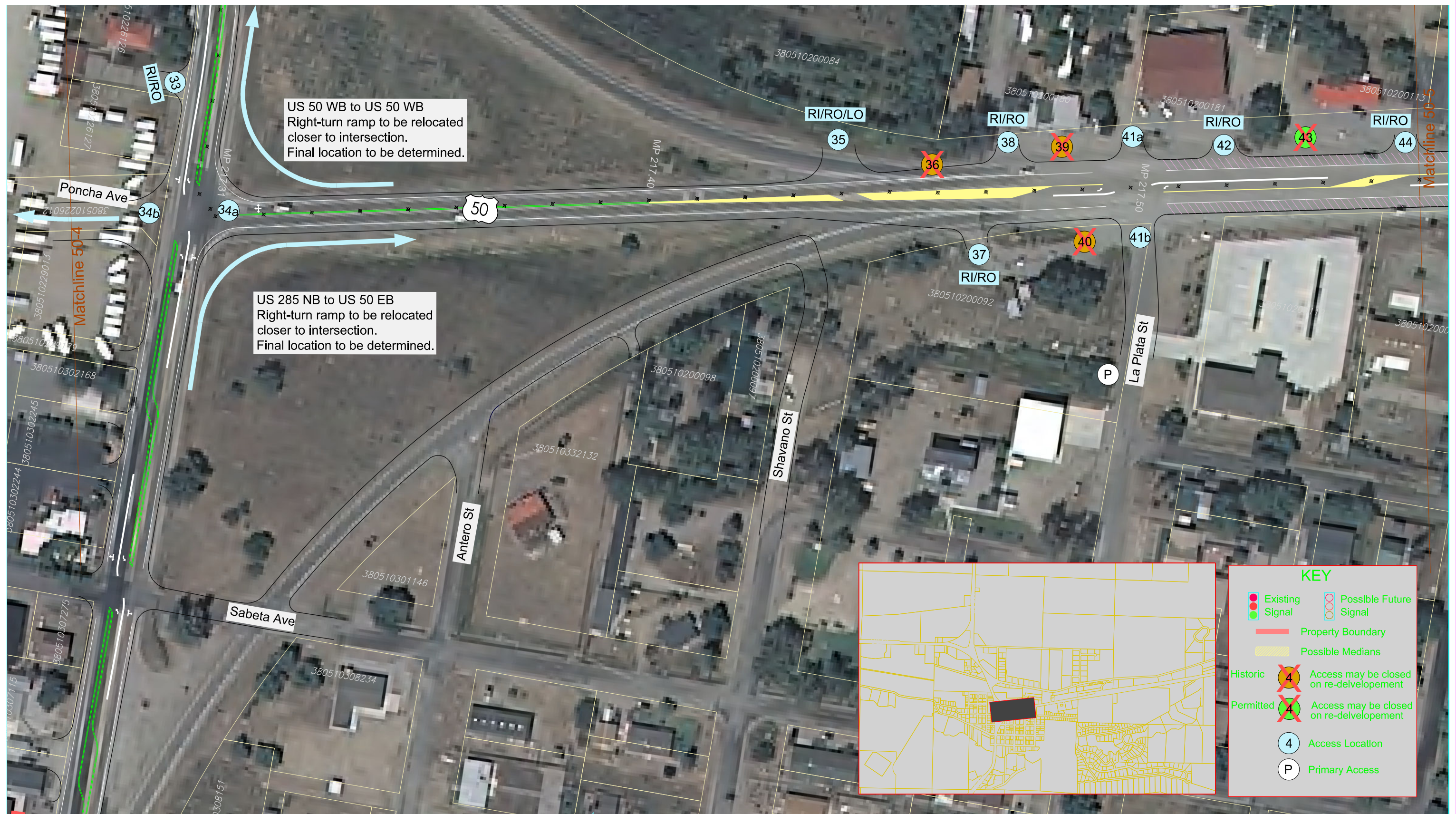
US 50 WB to US 50 WB  
Right-turn ramp to be relocated  
closer to intersection.  
Final location to be determined.



**US 50 / US 285 - PONCHA SPRINGS  
EXHIBIT B - ACCESS CONTROL PLAN ILLUSTRATED**

Scale	1"=100'	Date	3/13/12	Drawn by	KLH	Job #	112456	8
-------	---------	------	---------	----------	-----	-------	--------	---

**CDOT**  
 Region 5  
 US 50 - US 285  
 (Poncha Springs)  
**ACCESS CONTROL STUDY**



US 50 WB to US 50 WB  
Right-turn ramp to be relocated  
closer to intersection.  
Final location to be determined.

US 285 NB to US 50 EB  
Right-turn ramp to be relocated  
closer to intersection.  
Final location to be determined.

**KEY**

- Existing Signal
- Possible Future Signal
- Property Boundary
- Possible Medians
- Historic 4 Access may be closed on re-development
- Permitted 4 Access may be closed on re-development
- 4 Access Location
- P Primary Access



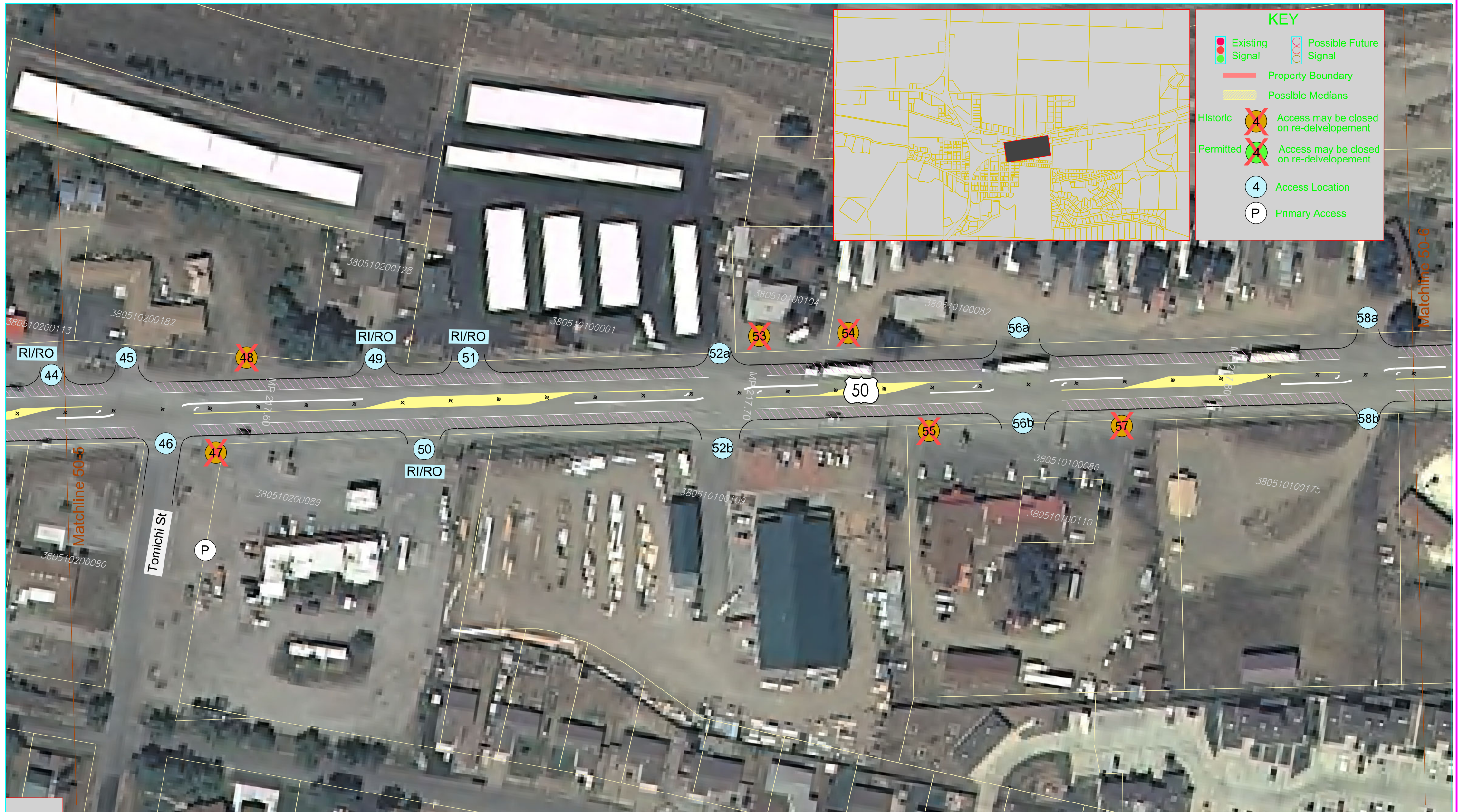
SCALE (IN FEET)  
0 50 100



**US 50 / US 285 - PONCHA SPRINGS**  
**EXHIBIT B - ACCESS CONTROL PLAN ILLUSTRATED**

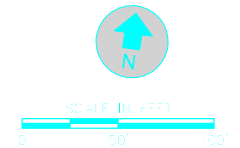
Scale	1"=100'	Date	3/13/12	Drawn by	KLH	Job #	112456	9
-------	---------	------	---------	----------	-----	-------	--------	---

**CDOT**  
Region 5  
US 50 - US 285  
(Poncha Springs)  
**ACCESS CONTROL STUDY**



**KEY**

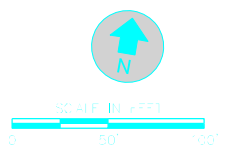
- Existing Signal
- Possible Future Signal
- Property Boundary
- Possible Medians
- 4 Historic Access may be closed on re-development
- 4 Permitted Access may be closed on re-development
- 4 Access Location
- P Primary Access



**US 50 / US 285 - PONCHA SPRINGS  
EXHIBIT B - ACCESS CONTROL PLAN ILLUSTRATED**

Scale	1"=100'	Date	3/13/12	Drawn by	KLH	Job #	112456	10
-------	---------	------	---------	----------	-----	-------	--------	----

CDOT  
Region 5  
US 50 - US 285  
(Poncha Springs)  
ACCESS CONTROL STUDY



**US 50 / US 285 - PONCHA SPRINGS  
EXHIBIT B - ACCESS CONTROL PLAN ILLUSTRATED**

Scale	1"=100'	Date	3/13/12	Drawn by	KLH	Job #	112456	11
-------	---------	------	---------	----------	-----	-------	--------	----

CDOT  
Region 5  
US 50 - US 285  
(Poncha Springs)  
**ACCESS CONTROL STUDY**

**KEY**

- Existing Signal
- Possible Future Signal
- Property Boundary
- Possible Medians
- Historic 4 Access may be closed on re-development
- Permitted 4 Access may be closed on re-development
- 4 Access Location
- P Primary Access